

LOOPING GRIPPER



USE:

Recommended for suspending HVAC, lighting, electrical and mechanical indoor static loads or from structure.

Material Specification:

Housing & Plungers: Nickel Plated Brass

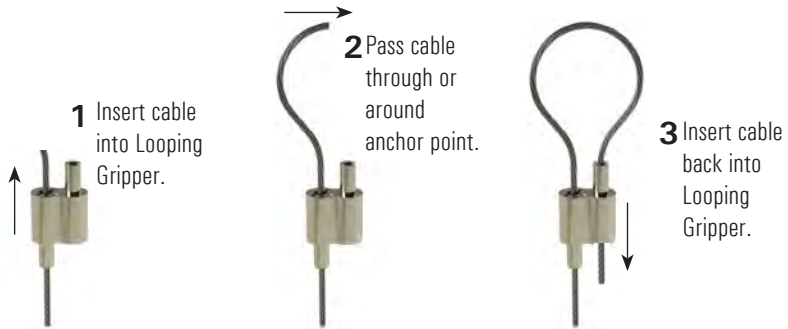
Springs: Steel

Ball Bearings: Brass

Wire Rope: Galvanized steel 1/16" - 3/32" 7x7. 1/8" 7x19.

Note: Griplock Systems cannot guarantee working loads with cable that has not been supplied by Griplock Systems.

**GRIP
LOCK**
SYSTEMS



Notes: Minimum 2" cable to exit bottom of gripper when done. Remove load before adjusting.

ZF-15X2-HG

for use with 1/16" cable

ZF-25X2-HG

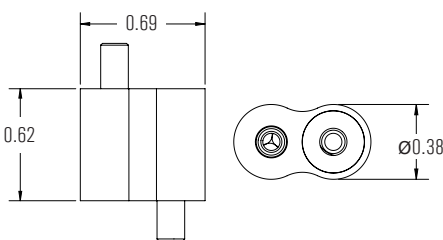
for use with 5/64" - 3/32"

ZF-30X2-HG

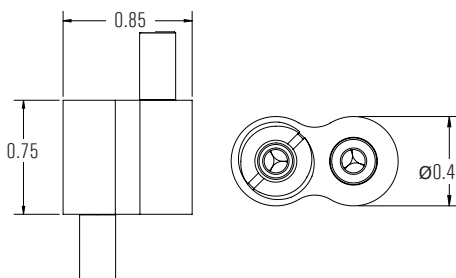
for use with 1/8" cable

Working Load Limit (WLL) 5:1 Safety Factor	1/16"	5/64"	3/32"	1/8"
	75 lbs	100 lbs	160 lbs	250 lbs

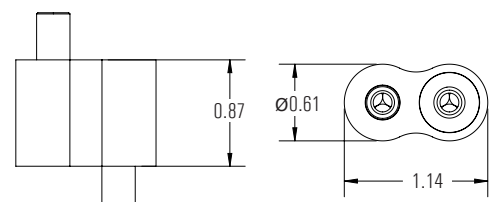
STATIC LOADS ONLY. NOT FOR LIFTING.



ZF-15X2-HG



ZF-25X2-HG



ZF-30X2-HG