

# VENSTAR®



## SURVEYOR DATA CONCENTRATOR

### MODEL DC400

- Gateway to the Surveyor Website
- Enables Remote Control and Monitoring via the Internet
- Ethernet Ready
- 4 Ports to Communicate with up to 255 Nodes
- Reliable RS485 Communication
- Data Logging Feature
- Alarm Reporting
- Upgradeable via the Internet



### UNPRECEDENTED VISIBILITY

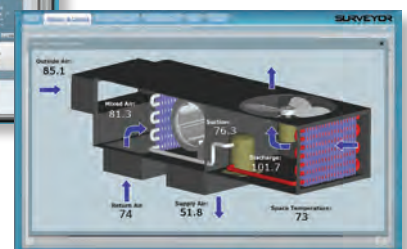
The Surveyor Energy Management System is a powerful tool for reducing energy waste and finding savings opportunities. Surveyor allows the user to easily control equipment at thousands of locations across a corporate network, while monitoring environmental conditions and system performance.

## SURVEYOR® ENERGY MANAGEMENT SYSTEM

Easy to Use  
Easy to Install  
Saves Energy  
Low Cost



Surveyor provides a unique combination of features that not only allows maintenance personnel to view and diagnose equipment in real time, but also allows an Energy Manager to see the status of the entire chain quickly and efficiently.



# SURVEYOR<sup>®</sup>

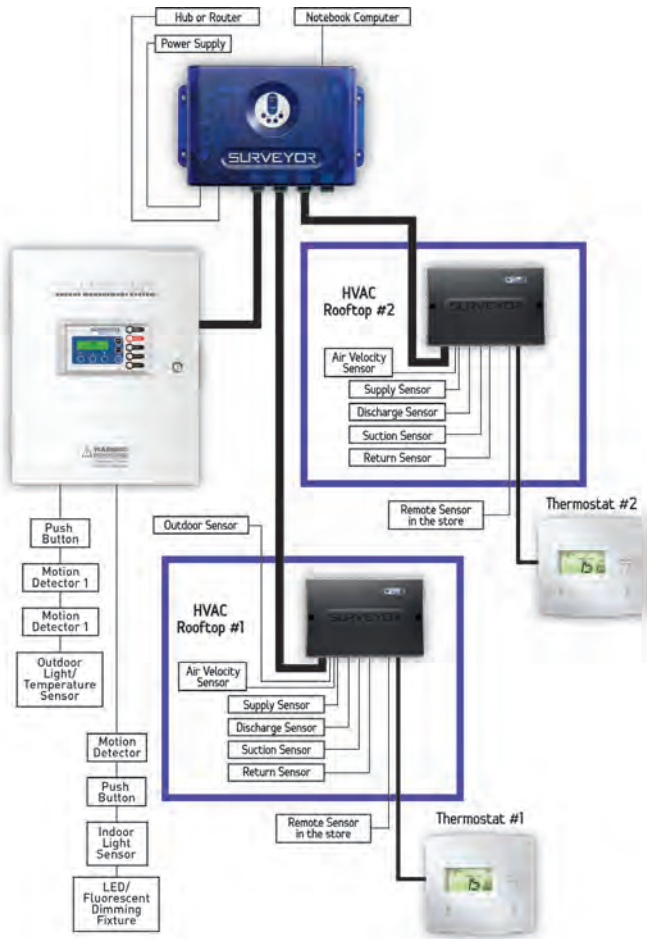
ENERGY MANAGEMENT SYSTEM



Easy to Use  
Easy to Install  
Saves Energy  
Low Cost

## SURVEYOR SYSTEM OVERVIEW

- Designed specifically to handle thousands of locations at the push of a button
- Remote monitoring and control of equipment to reduce energy usage
- Assures optimum store temperatures and lighting usage
- Allows for users to create customizable lists of locations
- Extensive data mining, diagnostics and analysis
- Standard and custom web and email reporting
- Tools for optimizing energy usage, maintenance, and store operations
- Easy Demand-Response manager
- User defined security levels for company wide access
- Best value EMS system available



## Industry Leadership

Surveyor currently monitors and controls over 24,000+ locations for Fortune 500 companies in all 50 U.S. states, Puerto Rico, Canada, Mexico, and the U.S. Virgin Islands.

## ACCESSORIES



### Power Monitor

PM400 series

Monitor total building power, lighting, HVAC or other electrical loads.



### Single Channel Input Module

SCIM400 series

Designed for customers' unique monitoring requirements

### Equipment Control Pac with Communicating Thermostat

model ECP400 & CT414

Monitor and control HVAC



# VENSTAR®



## SURVEYOR EQUIPMENT CONTROL PAC WITH COMMUNICATING THERMOSTAT



### MODEL ECP400

- Controls 2 Stage Heat and 2 Stage Cool Equipment
- Gas/Electric or Heat Pump
- Configurable Extra Output
- Economizer Logic On-Board
- Supports 5 Sensors to Monitor HVAC Health
  - Supply air temperature
  - Return air temperature
  - Suction pipe temperature
  - Discharge pipe temperature
  - Airflow velocity

### MODEL CT414

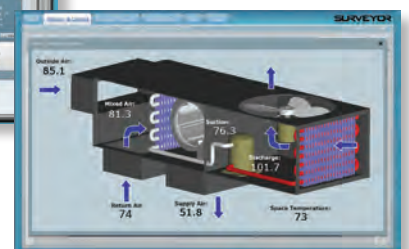
- 7-Day Programmable, 4 Settings/Day
- Auto-Changeover
- Self-Prompting Programming with Copy Command
- Can be Controlled via the Internet and/or Locally
- Fresh Air Control
- Large, Easy to Read Display
- Back Lit Display
- Low Voltage 4-Wire Bus for Easy Installation
- Neverlost™ Memory
- Dual Setpoint with Adjustable Deadband
- Setpoint Limiting
- Communicates with the Equipment Control Pac
- Keypad Lockout
- HVAC Sensor Display

## SURVEYOR® ENERGY MANAGEMENT SYSTEM

Easy to Use  
Easy to Install  
Saves Energy  
Low Cost



Surveyor provides a unique combination of features that not only allows maintenance personnel to view and diagnose equipment in real time, but also allows an Energy Manager to see the status of the entire chain quickly and efficiently.

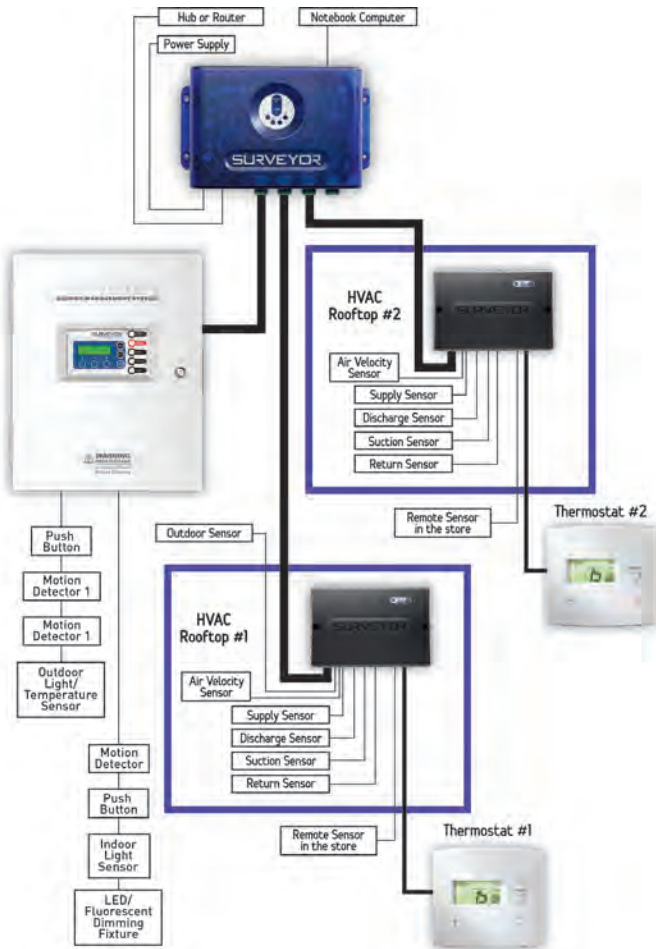


# SURVEYOR<sup>®</sup>

ENERGY MANAGEMENT SYSTEM

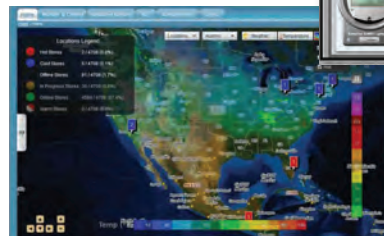


Easy to Use  
Easy to Install  
Saves Energy  
Low Cost



## SURVEYOR SYSTEM OVERVIEW

- Designed specifically to handle thousands of locations at the push of a button
- Remote monitoring and control of equipment to reduce energy usage
- Assures optimum store temperatures and lighting usage
- Allows for users to create customizable lists of locations
- Extensive data mining, diagnostics and analysis
- Standard and custom web and email reporting
- Tools for optimizing energy usage, maintenance, and store operations
- Easy Demand-Response manager
- User defined security levels for company wide access
- Best value EMS system available



## Industry Leadership

Surveyor currently monitors and controls over 24,000+ locations for Fortune 500 companies in all 50 U.S. states, Puerto Rico, Canada, Mexico, and the U.S. Virgin Islands.

## ACCESSORIES

### Outdoor Light & Temperature Sensor

model S-OLS500-1



### Indoor Remote Temperature Sensor

model RS410

### Sensor Pac

model SP400



### Drop down Remote Temperature Sensor

model ACC0404

Mock surveillance camera design deters robbery, theft, and vandalism

# VENSTAR®



## SURVEYOR LOAD CONTROL PANEL



### MODEL LCP500

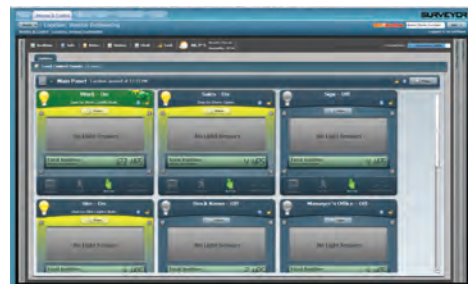
- Control up to 10 independent zones of lighting
- Supports daylight harvesting
- Networked sensors & accessories
- Multiple accessories can be used to control the same zone
- Multiple Control Methods – Use one, or a combination of the following:
  - Event driven
  - Time schedule control
  - Manual operation
  - Internet control
- One touch lighting override – up to 2 hour override per zone
- Digital Control Module with informational display – module can be mounted remotely
- Alarm Interface to turn on all lights
- Meets California Title 24 Building Energy Efficiency Standards
- UL listed and approved

## SURVEYOR® ENERGY MANAGEMENT SYSTEM

Easy to Use  
Easy to Install  
Saves Energy  
Low Cost



Surveyor provides a unique combination of features that not only allows maintenance personnel to view and diagnose equipment in real time, but also allows an Energy Manager to see the status of the entire chain quickly and efficiently.

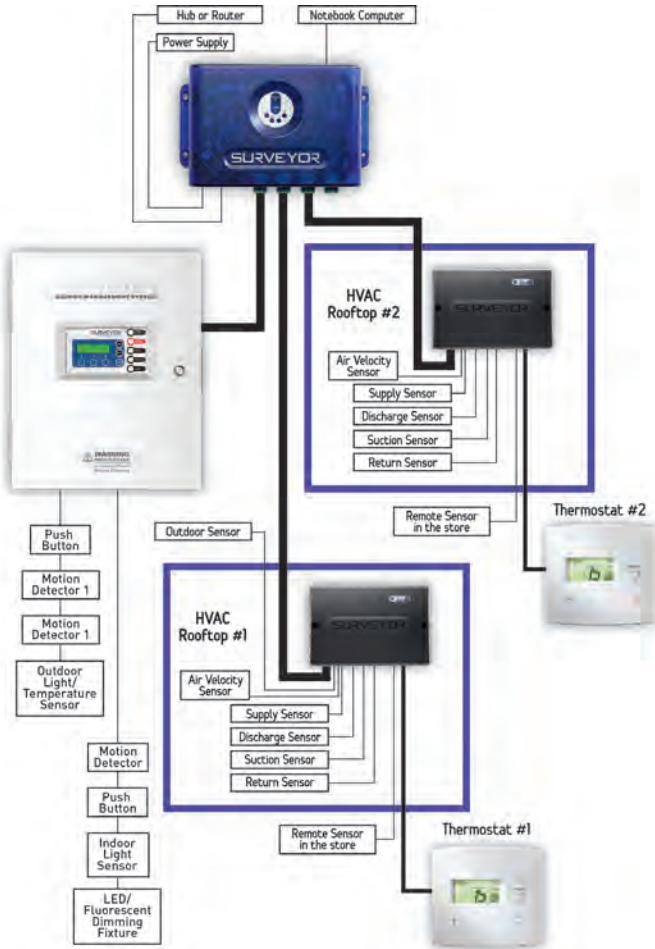


# SURVEYOR<sup>®</sup>

ENERGY MANAGEMENT SYSTEM

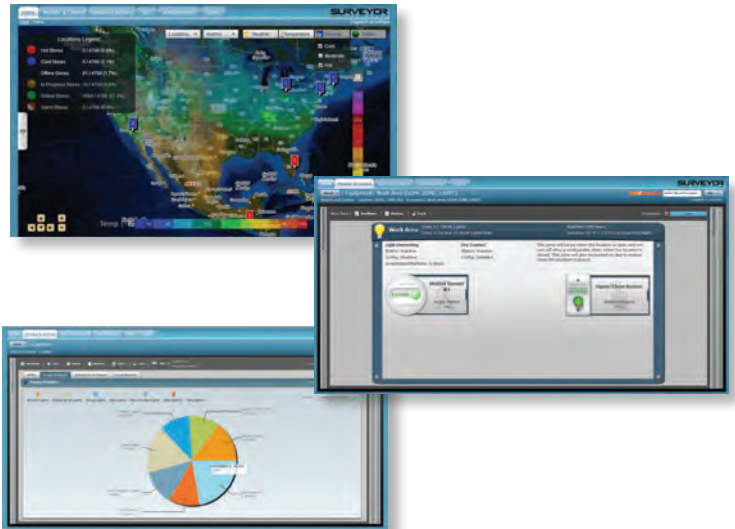


Easy to Use  
Easy to Install  
Saves Energy  
Low Cost



## SURVEYOR SYSTEM OVERVIEW

- Designed specifically to handle thousands of locations at the push of a button
- Remote monitoring and control of equipment to reduce energy usage
- Ensures optimum store temperatures and lighting usage
- Allows for users to create customizable lists of locations
- Extensive data mining, diagnostics and analytics
- Standard and custom reporting via web and email
- Tools for optimizing energy usage, maintenance, and store operations
- Easy Demand-Response manager
- Configurable security levels for company defined access
- Best value Energy Management System available



## Industry Leadership

Surveyor currently monitors and controls over 24,000+ locations for Fortune 500 companies in all 50 U.S. states, Puerto Rico, Canada, Mexico, and the U.S. Virgin Islands.

## ACCESSORIES

### Motion Detector

model S-MDX500-1



### Push Button

model S-PBG500-1



### Outdoor Light & Temperature Sensor

model S-OLS500-1



### Indoor Light Sensor

model S-LSX500-1

