



The Original Flame-Free  
Refrigerant Press Fittings



PROUDLY MADE  
IN AMERICA

# Table of Contents

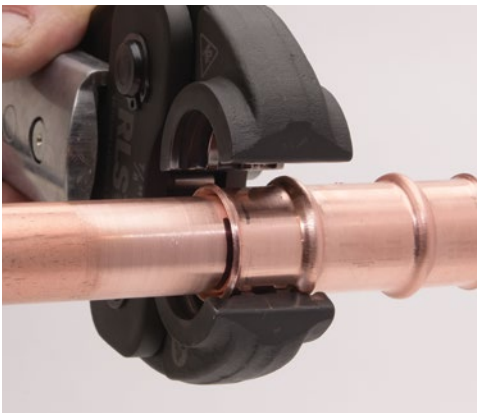
Introduction .....	3-4
Couplings and Slip Couplings .....	5
90° Elbows and 90° Street Elbows.....	6
45° Elbows and Tees .....	7
Reducers and Reducing Bushings.....	8
SAE/Euro Flares and Caps.....	9
Ancillary Products .....	10-11
Tools, Jaws and Accessories .....	12-15
Technical Data.....	16

## 15-Year Limited Warranty

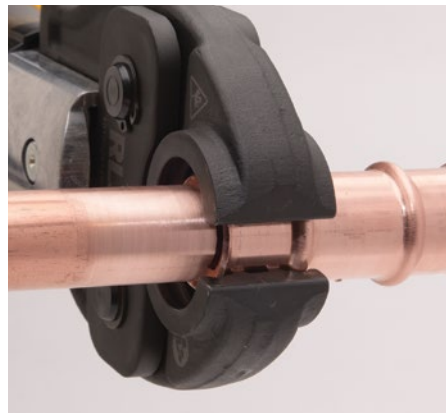
All RLS press fittings are backed by a 15-year limited warranty when installed in accordance with RLS installation instructions using RLS-approved tools and jaws.

See information on [rapidlockingsystem.com](http://rapidlockingsystem.com) for complete details.

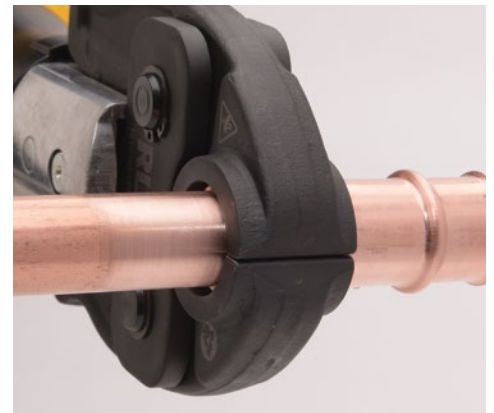
## Fast, reliable HVAC/R joints as easy as 1-2-3!



**1. Insert the tube**



**2. Align the jaws**



**3. Pull the trigger**

Get reliable, flame-free connections in seconds with RLS, the original HVAC/R press fittings. Just prep the copper tube ends and then let the battery-powered tool do the work. Our patented technology results in two 360° metal-to-metal connections with each press – creating a permanent mechanical joint every time, without the dangers of an open flame and flammable gas.

With our proven, unmatched track record of success – including more than 15 million fittings installed worldwide since 2015 – you can count on the dependability of RLS. Plus, RLS-compatible jaws are available for most press tools (see page 14 for details).

The most proven, most trusted and most complete line of HVAC/R press fittings in the world.



## **RLS ADVANTAGES:**

- *Field-proven since 2015*
- *15 million+ installed fittings*
- *Sizes from 1/4" to 2-1/8"*
- *Connections in 10 seconds*
- *UL Listed to 700 psi*
- *360° metal-to-metal joints*
- *Works in tight spaces*
- *No gas or brazing materials*
- *No flame, no fire hazards*
- *No hot work permits*
- *No fire watch*
- *No nitrogen purging*
- *Made in America*
- *15-year limited warranty*

# Introduction

“RLS has been invaluable to growing our business. We’re able to get jobs done quicker without sacrificing the quality of our work and we’ve won more jobs because of it. And our clients always come back to us.”

– Jeff DeMassari  
*First Choice Heating & Cooling*

“I’m never going to braze again unless I absolutely need to. RLS press fittings are faster and safer to install, but provide just as reliable of a connection as if it had been brazed. They are a gamechanger that have saved me countless hours of installation time and fire prep.”

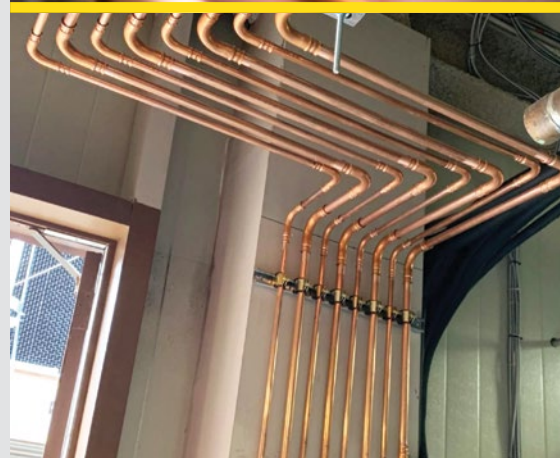
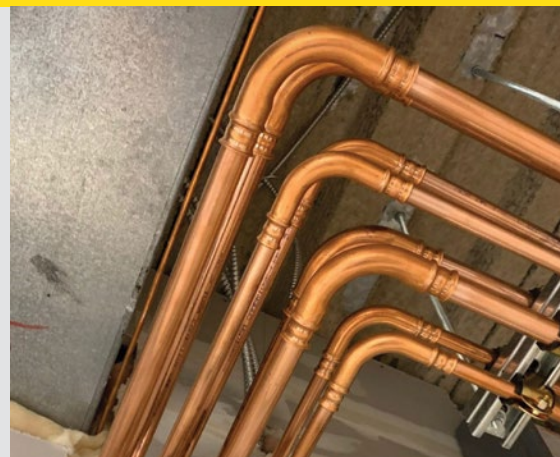
– Sam Wyatt  
*Protec Industrial*

“The amount of time we save when piping, and the security of knowing we can press fittings and not have to constantly purge nitrogen, is priceless.”

– Robert Swiecone  
*Superheat and Subcooling HVAC*

“RLS press fittings are at the point where they’re just as dependable as any other techniques available to contractors today, but don’t require the expensive, labor-intensive training like brazing does. Once you get going with the tool, pressing becomes second nature.”

– Ian Barcelos  
*ICR Industries*



## All RLS products are approved for use with the following refrigerants:

R-134A	R-404A	R-407A	R-407C	R-407F	R-407H
R-410A	R-417A	R-421A	R-422B	R-422D	R-424A
R-427A	R-434A	R-437A	R-438A	R-448A	R-449A
R-450A	R-452A	R-453A	R-456A	R-507A	R-513A
R-513B	R-718	Ethylene Glycol	R-22*		

\*Special order item, includes neoprene o-rings in place of HNBR.

Contact us about special blends or other refrigerants not listed here.

Check your local codes to ensure that RLS press fittings are suitable for use with your particular refrigerant.

RLS fittings are also compatible with the following industrial (non-refrigerant) gasses: nitrogen, argon, helium and oxygen (non-medical).

Testing on A2, A2L and A3 refrigerants is ongoing, with expected approval by end of 2023.



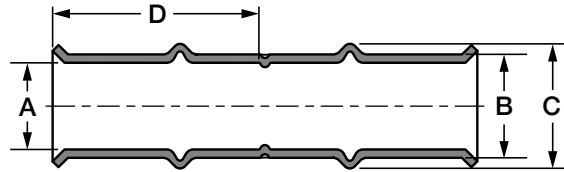
# COUPLINGS



## Couplings



DIMENSIONS

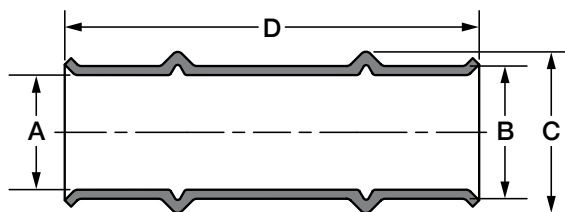


Size (Inch)	Part Number	Dimensions (Inches)				Box Quantity	Carton Quantity	Carton Weight
		A	B	C	D			
1/4	3011040400111	0.26	0.34	0.45	0.95	10	100	2.3 lbs.
5/16	3011050500111	0.32	0.40	0.52	0.93	10	100	2.9 lbs.
3/8	3011060600111	0.39	0.47	0.59	0.98	10	100	3.5 lbs.
1/2	3011080800111	0.51	0.59	0.73	1.25	10	100	6.1 lbs.
5/8	3011101000111	0.64	0.74	0.89	1.24	10	100	9.5 lbs.
3/4	3011121200111	0.76	0.88	1.07	1.29	10	40	5.5 lbs.
7/8	3011141400111	0.89	1.02	1.19	1.31	10	40	7.0 lbs.
1	3011161600111	1.01	1.16	1.36	1.31	10	40	9.5 lbs.
1-1/8	3011181800111	1.14	1.29	1.45	1.29	10	40	10.3 lbs.
1-1/4	3011202000111	1.26	1.41	1.62	1.30	12	24	7.4 lbs.
1-3/8	3011222200111	1.39	1.54	1.75	1.57	12	24	9.0 lbs.
1-5/8	3011262600111	1.64	1.88	2.18	1.85	4	4	3.4 lbs.
2-1/8	3011343400111	2.14	2.38	2.68	2.34	4	4	5.5 lbs.

## Slip Couplings



DIMENSIONS



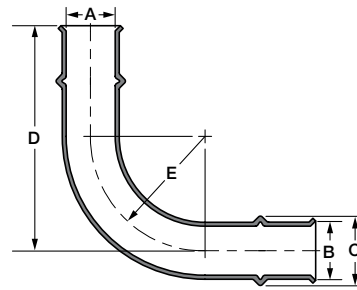
Size (Inch)	Part Number	Dimensions (Inches)				Box Quantity	Carton Quantity	Carton Weight
		A	B	C	D			
1/4	3021040400111	0.26	0.34	0.45	2.00	10	100	2.3 lbs.
5/16	3021050500111	0.32	0.40	0.52	2.01	10	100	2.9 lbs.
3/8	3021060600111	0.39	0.47	0.59	2.05	10	100	3.5 lbs.
1/2	3021080800111	0.51	0.59	0.73	2.74	10	100	6.1 lbs.
5/8	3021101000111	0.64	0.74	0.89	2.75	10	100	9.5 lbs.
3/4	3021121200111	0.76	0.88	1.07	2.75	10	40	5.5 lbs.
7/8	3021141400111	0.89	1.02	1.19	2.74	10	40	7.0 lbs.
1-1/8	3021181800111	1.14	1.29	1.45	2.77	10	40	10.3 lbs.
1-3/8	3021222200111	1.39	1.54	1.75	3.15	12	24	9.0 lbs.

# ELBOWS

## 90° Elbows



DIMENSIONS

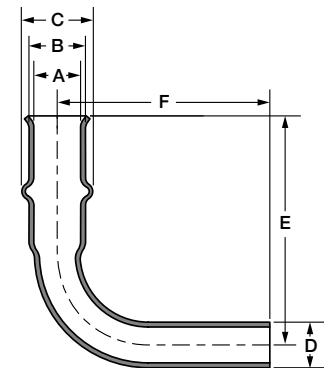


Size (Inch)	Part Number	Dimensions (Inches)					Box Quantity	Carton Quantity	Carton Weight
		A	B	C	D	E			
1/4	3031040400111	0.26	0.34	0.45	2.01	0.68	10	100	4.4 lbs.
5/16	3031050500111	0.32	0.40	0.52	2.13	0.81	10	100	5.8 lbs.
3/8	3031060600111	0.39	0.47	0.59	2.27	0.93	10	100	7.4 lbs.
1/2	3031080800111	0.51	0.59	0.73	2.88	1.18	10	100	11.6 lbs.
5/8	3031101000111	0.64	0.74	0.89	3.21	1.47	10	100	20.0 lbs.
3/4	3031121200111	0.76	0.88	1.07	3.47	1.76	10	40	12.3 lbs.
7/8	3031141400111	0.89	1.02	1.19	3.75	2.03	10	40	16.6 lbs.
1	3031161600111	1.01	1.16	1.36	4.04	2.33	10	40	22.2 lbs.
1-1/8	3031181800111	1.14	1.29	1.45	4.29	2.54	10	40	27.8 lbs.
1-1/4	3031202000111	1.26	1.41	1.62	4.30	2.53	5	5	3.7 lbs.
1-3/8	3031222200111	1.39	1.54	1.75	4.54	2.75	5	5	4.9 lbs.
1-5/8	3031262600111	1.64	1.88	2.18	5.49	3.25	2	2	4.6 lbs.
2-1/8	3031343400111	2.14	2.38	2.68	6.83	4.25	2	2	7.3 lbs.

## 90° Street Elbows



DIMENSIONS

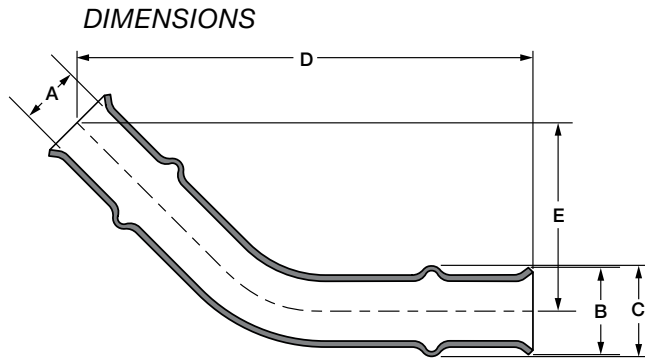


Size (Inch)	Part Number	Dimensions (Inches)						Box Quantity	Carton Quantity	Carton Weight
		A	B	C	D	E	F			
3/8	3501060600111	0.39	0.47	0.59	0.38	1.75	1.89	10	100	4.8 lbs.
1/2	3501080800111	0.51	0.59	0.73	0.50	2.56	2.65	10	100	9.2 lbs.
5/8	3501101000111	0.64	0.74	0.89	0.63	2.64	2.81	10	100	15.1 lbs.
3/4	3501121200111	0.76	0.88	1.07	0.75	3.00	3.15	10	40	9.2 lbs.
7/8	3501141400111	0.89	1.02	1.19	0.88	3.25	3.40	10	40	12.7 lbs.
1-1/8	3501181800111	1.14	1.29	1.45	1.13	3.80	3.93	10	40	22.1 lbs.
1-3/8	3501222200111	1.39	1.54	1.75	1.38	4.38	4.51	5	5	3.8 lbs.

# ELBOWS/TEES



## 45° Elbows

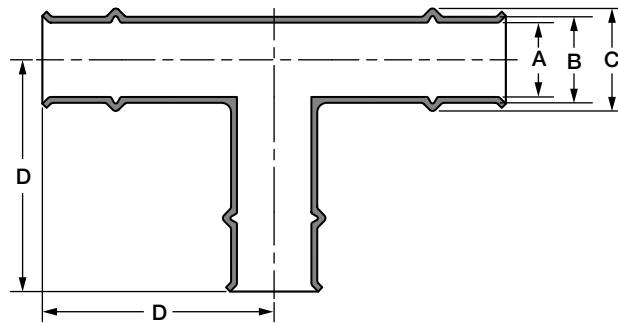


Size (Inch)	Part Number	Dimensions (Inches)					Box Quantity	Carton Quantity	Carton Weight
		A	B	C	D	E			
3/8	3081060600111	0.39	0.56	0.59	2.94	1.21	10	100	5.8 lbs.
1/2	3081080800111	0.51	0.71	0.73	3.72	1.54	10	100	9.6 lbs.
5/8	3081101000111	0.64	0.86	0.88	3.97	1.64	10	100	15.9 lbs.
3/4	3081121200111	0.76	1.02	1.07	4.12	1.70	10	40	9.4 lbs.
7/8	3081141400111	0.89	1.13	1.19	4.49	1.86	10	40	12.7 lbs.
1-1/8	3081181800111	1.14	1.41	1.45	4.84	2.00	10	40	20.2 lbs.
1-3/8	3081222200111	1.39	1.68	1.75	5.11	2.11	5	5	3.8 lbs.
1-5/8	3081262600111	1.64	2.00	2.18	6.22	2.58	2	2	3.1 lbs.
2-1/8	3081343400111	2.14	2.57	2.68	7.44	3.08	2	2	4.7 lbs.

## Tees



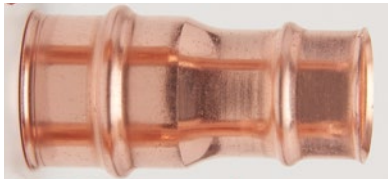
### DIMENSIONS



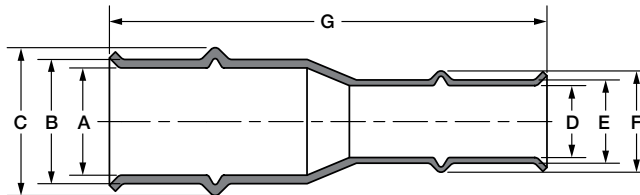
Size (Inch)	Part Number	Dimensions (Inches)				Box Quantity	Carton Quantity	Carton Weight
		A	B	C	D			
3/8	3091060606111	0.39	0.47	0.59	1.63	10	100	8.4 lbs.
1/2	3091080808111	0.51	0.59	0.72	2.23	10	100	26.4 lbs.
5/8	3091101010111	0.64	0.74	0.87	2.30	10	100	26.8 lbs.
3/4	3091121212111	0.76	0.88	1.05	2.38	10	40	15.0 lbs.
7/8	3091141414111	0.89	1.02	1.19	2.43	10	40	20.3 lbs.
1	3091161616111	1.01	1.16	1.36	2.59	10	40	23.7 lbs.
1-1/8	3091181818111	1.14	1.29	1.45	2.56	10	40	30.4 lbs.
1-1/4	3091202020111	1.26	1.41	1.62	3.36	5	5	4.7 lbs.
1-3/8	3091222222111	1.39	1.54	1.75	3.36	5	5	5.3 lbs.
1-5/8	3091262626111	1.64	1.88	2.18	3.95	2	2	4.7 lbs.
2-1/8	3091343434111	2.14	2.38	2.68	4.18	2	2	6.3 lbs.

# REDUCERS/REDUCING BUSHINGS

## Reducers



DIMENSIONS

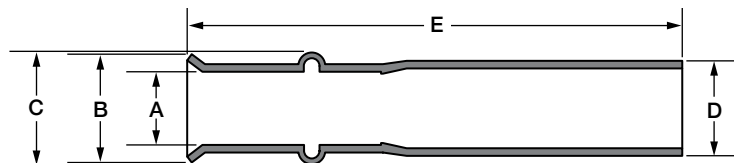


Size (Inch)	Part Number	Dimensions (Inches)							Box Quantity	Carton Quantity	Carton Weight
		A	B	C	D	E	F	G			
3/8 to 1/4	3051060400111	0.39	0.47	0.59	0.26	0.34	0.45	2.24	10	100	3.8 lbs.
1/2 to 1/4	3051080400111	0.51	0.59	0.73	0.26	0.34	0.45	2.71	10	100	5.0 lbs.
1/2 to 3/8	3051080600111	0.51	0.59	0.73	0.39	0.47	0.58	2.58	10	100	5.5 lbs.
5/8 to 1/4	3051100400111	0.64	0.74	0.89	0.26	0.34	0.45	2.70	10	100	7.9 lbs.
5/8 to 3/8	3051100600111	0.64	0.74	0.89	0.39	0.47	0.58	2.70	10	100	8.1 lbs.
5/8 to 1/2	3051100800111	0.64	0.74	0.87	0.51	0.59	0.72	3.10	10	100	8.7 lbs.
3/4 to 1/2	3051120800111	0.76	0.88	1.05	0.51	0.59	0.72	3.10	10	40	4.7 lbs.
3/4 to 5/8	3051121000111	0.76	0.88	1.05	0.64	0.74	0.87	3.00	10	40	5.2 lbs.
7/8 to 1/2	3051140800111	0.89	1.02	1.19	0.51	0.59	0.72	3.05	10	40	5.6 lbs.
7/8 to 5/8	3051141000111	0.89	1.02	1.19	0.64	0.74	0.87	3.05	10	40	6.6 lbs.
7/8 to 3/4	3051141200111	0.89	1.02	1.19	0.76	0.88	1.05	3.11	10	40	7.3 lbs.
1 to 7/8	3051161400111	1.01	1.16	1.37	0.89	1.02	1.19	3.09	10	40	9.1 lbs.
1-1/8 to 1/2	3051180800111	1.14	1.29	1.45	0.51	0.59	0.72	3.25	10	40	8.1 lbs.
1-1/8 to 5/8	3051181000111	1.14	1.29	1.45	0.64	0.74	0.87	3.25	10	40	9.0 lbs.
1-1/8 to 3/4	3051181200111	1.14	1.29	1.45	0.76	0.88	1.05	3.18	10	40	9.6 lbs.
1-1/8 to 7/8	3051181400111	1.14	1.29	1.45	0.89	1.02	1.19	3.10	10	40	9.9 lbs.
1-3/8 to 7/8	3051221400111	1.39	1.54	1.75	0.89	1.02	1.19	3.66	12	24	7.9 lbs.
1-3/8 to 1-1/8	3051221800111	1.39	1.54	1.75	1.14	1.29	1.45	3.34	12	24	8.2 lbs.
1-5/8 to 1-1/8	3051261800111	1.64	1.88	2.18	1.14	1.29	1.45	4.50	4	4	2.9 lbs.
1-5/8 to 1-3/8	3051262200111	1.64	1.88	2.18	1.39	1.54	1.75	4.30	4	4	3.0 lbs.
2-1/8 to 1-3/8	3051342200111	2.14	2.38	2.68	1.39	1.54	1.75	5.20	4	4	4.3 lbs.
2-1/8 to 1-5/8	3051342600111	2.14	2.38	2.68	1.64	1.88	2.18	5.05	4	4	5.2 lbs.

## Reducing Bushings



DIMENSIONS



Size (Inch)	Part Number	Dimensions (Inches)					Box Quantity	Carton Quantity	Carton Weight
		A	B	C	D	E			
1/2 to 3/8	3521080600111	0.39	0.56	0.59	0.50	2.50	10	100	4.6 lbs.
5/8 to 1/2	3521100800111	0.51	0.68	0.72	0.63	2.95	10	100	7.3 lbs.
3/4 to 5/8	3521121000111	0.64	0.84	0.87	0.75	2.98	10	40	4.4 lbs.
7/8 to 3/4	3521141200111	0.76	1.02	1.05	0.88	3.04	10	40	5.9 lbs.
1-1/8 to 7/8	3521181400111	0.89	1.10	1.19	1.13	3.06	10	40	8.5 lbs.
1-3/8 to 1-1/8	3521221800111	1.14	1.40	1.45	1.38	3.12	12	24	7.0 lbs.



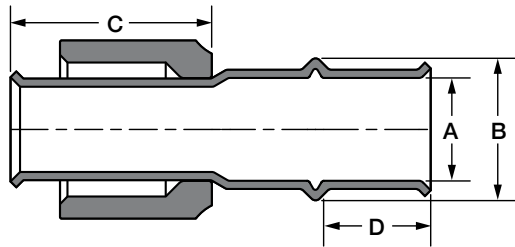
# FLARES/CAPS



## SAE/Euro Flares



### DIMENSIONS



Per ARI Guideline M-97 45° Refrigeration Flare Fittings and Copper Tubing

Size	Torque, ft-lbs [N*m]	
	Minimum	Maximum
1/4"	8 [11]	10 [14]
3/8"	15 [20]	25 [34]
1/2"	25 [34]	35 [47]
5/8"	40 [54]	55 [75]
3/4"	50 [68]	60 [81]

Note: Per Section 9.5 of the M-97 Guideline, when applying torque to the flare connection the use of lubricants/lubrication is not recommended.

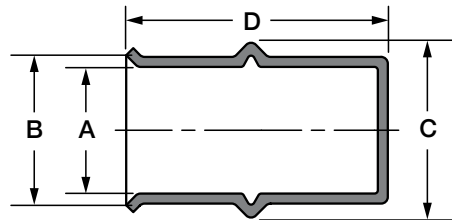
Note: Applying a torque above the maximum limit may distort or damage the sealing surface of the flare.

Size (Inch)	Part Number	Dimensions (Inches)				Box Quantity	Carton Quantity	Carton Weight
		A	B	C	D			
1/4	3291040000111	0.26	0.45	1.38	0.56	10	100	2.5 lbs.
3/8	3291060000111	0.39	0.59	1.38	0.58	10	100	3.7 lbs.
1/2	3291080000111	0.51	0.72	1.13	0.75	10	100	5.9 lbs.
5/8	3291100000111	0.64	0.87	1.48	0.75	10	40	3.6 lbs.
3/4	3291120000111	0.76	1.05	1.48	0.80	10	40	5.2 lbs.

## Caps



### DIMENSIONS



Size (Inch)	Part Number	Dimensions (Inches)				Box Quantity	Carton Quantity	Carton Weight
		A	B	C	D			
1/4	3071040000111	0.26	0.34	0.45	1.45	10	100	1.8 lbs.
5/16	3071050000111	0.32	0.40	0.52	1.45	10	100	2.3 lbs.
3/8	3071060000111	0.39	0.47	0.59	1.45	10	100	2.6 lbs.
1/2	3071080000111	0.51	0.59	0.72	1.97	10	100	5.1 lbs.
5/8	3071100000111	0.64	0.74	0.87	1.98	10	100	6.9 lbs.
3/4	3071120000111	0.76	0.88	1.05	1.97	10	40	3.8 lbs.
7/8	3071140000111	0.89	1.02	1.19	1.90	10	40	4.9 lbs.
1	3071160000111	1.01	1.16	1.36	2.00	10	40	7.2 lbs.
1-1/8	3071180000111	1.14	1.29	1.45	1.99	10	40	7.8 lbs.
1-1/4	3071200000111	1.26	1.41	1.62	2.50	12	24	6.5 lbs.
1-3/8	3071220000111	1.39	1.54	1.75	2.49	12	24	7.2 lbs.

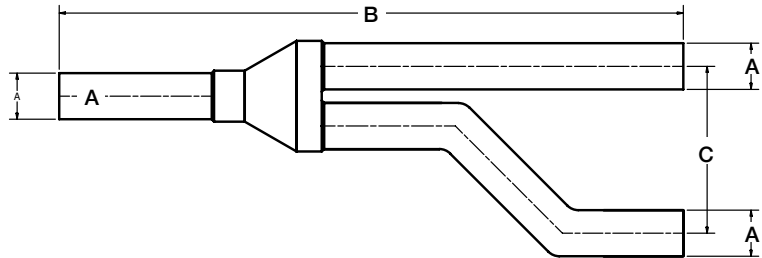
# ANCILLARY PRODUCTS

ODM products are compatible with RLS fittings.

## ODM Y-Joints



*DIMENSIONS*

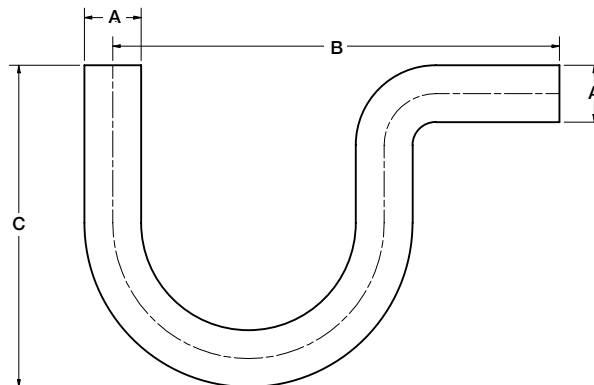


Size (Inch)	Part Number with insulation	Part Number without insulation	Dimensions (Inches)			Box Quantity	Carton Quantity
			A	B	C		
3/8	3771060606130	3771060606111	0.38	7.56	2.36	2	44
1/2	3771080808130	3771080808111	0.50	8.94	2.48	2	44
5/8	3771101010130	3771101010111	0.63	9.45	2.60	2	42
3/4	3771121212130	3771121212111	0.75	10.16	2.72	2	24
7/8	3771141414130	3771141414111	0.88	12.09	2.87	2	24
1-1/8	3771181818130	3771181818111	1.13	13.11	3.54	1	10
1-3/8	3771222222130	3771222222111	1.38	14.92	4.06	1	10

## ODM P-Traps



*DIMENSIONS*



Size (Inch)	Part Number	Dimensions (Inches)			Box Quantity	Carton Quantity
		A	B	C		
1/2	3761080800111	0.50	5.12	3.54	2	80
5/8	3761101000111	0.63	5.12	3.62	2	80
3/4	3761121200111	0.75	5.91	4.25	2	38
7/8	3761141400111	0.88	6.69	4.65	2	38
1-1/8	3761181800111	1.13	8.27	5.98	2	10
1-3/8	3761222200111	1.38	10.24	7.48	2	10

# ANCILLARY PRODUCTS

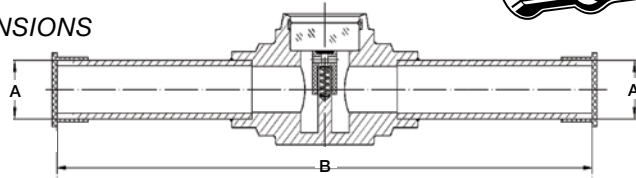
ODM products are compatible with RLS fittings.



## ODM Sight Glasses



DIMENSIONS



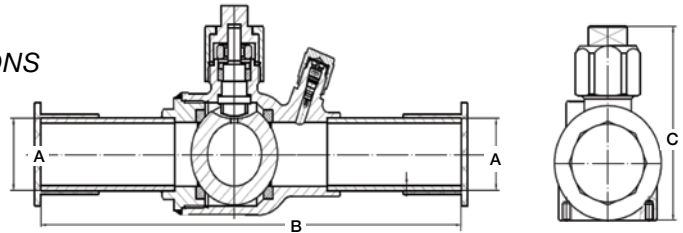
Size (Inch)	Part Number	Dimensions (Inches)		Box Quantity	Carton Quantity
		A	B		
1/4	3781040400111	0.25	4.02	1	100
3/8	3781060600111	0.37	4.69	1	100
1/2	3781080800111	0.50	6.10	1	100
5/8	3781101000111	0.63	6.14	1	50
3/4	3781121200111	0.75	6.34	1	50
7/8	3781141400111	0.88	6.57	1	50
1-1/8	3781181800111	1.13	7.56	1	30

## ODM Ball Valves

(Bi-Directional with Schrader valves)



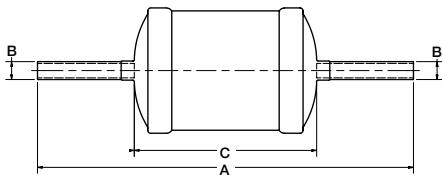
DIMENSIONS



Size (Inch)	Part Number	Dimensions (Inches)			Box Quantity	Carton Quantity
		A	B	C		
1/4	3791040400111	0.25	6.75	2.02	1	40
3/8	3791060600111	0.37	6.34	2.02	1	40
1/2	3791080800111	0.50	6.56	2.02	1	40
5/8	3791101000111	0.63	6.77	2.30	1	40
3/4	3791121200111	0.75	6.99	2.60	1	30
7/8	3791141400111	0.88	7.24	2.60	1	30
1-1/8	3791181800111	1.13	8.16	3.27	1	30
1-3/8	3791222200111	1.37	9.00	3.88	1	24

## ODM Filter Driers

DIMENSIONS



Size (Inch)	Part Number	Desiccant (Cubic Inches)	Dimensions (Inches)			Box Quantity	Carton Quantity
			A	B	C		
3/8 Liquid Line	3821060600111	8	7.95	0.38	3.90	1	30
3/8 Liquid Line	3831060600111	16	8.86	0.38	4.80	1	30
1/2 Liquid Line	3831080800111	16	8.94	0.50	4.80	1	30
3/8 Liquid Line Bi-Directional	3921060600111	8	7.87	0.38	3.82	1	30
3/8 Liquid Line Bi-Directional	3931060600111	16	8.66	0.38	4.61	1	30

Part Number	Connections Inlet/Outlet	Flow Capacity Ton @ 1psi PA (For kw Multiply Ton By 3.5)				Water Capacity Drops of Water									
		R134a	R22 & R410A	R407C	R404A & R507	R134a		R22		R407c		R410A		R404A & R507	
						75°F	125°F	75°F	125°F	75°F	125°F	75°F	125°F	75°F	125°F
3821060600111	3/8" ODM	5.42	6.0	6.0	4.0	265	245	250	225	205	165	170	130	275	260
3831060600111	3/8" ODM	6.2	6.8	6.8	4.57	396	366	271	336	306	246	256	196	406	286
3831080800111	1/2" ODM	8.5	9.4	9.4	6.2	396	366	271	336	306	246	256	196	406	286
3921060600111	3/8" ODM	4.8	5.1	5.0	3.33	265	245	250	225	205	165	170	130	275	260
3931060600111	3/8" ODM	4.9	5.2	5.2	3.49	359	341	360	307	361	333	327	302	392	365

All ratings are in accordance with ANSI/AHRI standard 710-2009.

## Klauke® 32 kN and 19 kN Press Tools

### Benefits:

- Durable, high-quality construction that is built to last
- Short pressing cycle – 10 seconds or less – increases productivity
- Compact design and 350° jaw rotation allows technician to install in tight spaces
- Automatic piston return
- Safety feature that lets the press cycle be interrupted, allowing for manual release of the piston, if needed
- High-quality, powerful Makita Li-Ion technology, with charging time of just 15 minutes
- Tool service indicated via imbedded LEDs, illuminates at 10,000 cycles



32 kN press tool



19 kN press tool

### 32 kN Tool Features:

Pressing Force: 32 kN

Presses/charge: 350-400 (4.0 Ah)

Battery Capacity: 18V / 4.0 Ah Li-Ion Makita (BL1840B)

Charging Time: 15 minutes

Operating Temp. Range: -10°C to 40°C (14°F to 104°F)

Weight with Battery:

Without Jaw: 3.6 kg (8.0 lb)

Including Jaw: 5.7 kg (12.5 lb)

Dimensions: 359 x 76 x 317 mm

### 19 kN Tool Features:

Pressing Force: 19 kN

Presses/charge: 100-150 (2.0 Ah)

Battery Capacity: 18V / 2.0 Ah Li-Ion Makita (BL1820B)

Charging Time: 15 minutes

Operating Temp. Range: -10°C to 40°C (14°F to 104°F)

Weight with Battery:

Without Jaw: 1.8 kg (4.0 lb)

Including Jaw: 3.1 kg (6.8 lb)

Dimensions: 395 x 80 x 118 mm

## Klauke® Jaws

### Klauke 32 kN Jaws

Size	Part Number
1/4"	399021321040
5/16"	399021321050
3/8"	399021321060
1/2"	399021321080
5/8"	399021321100
3/4"	399021321120
7/8"	399021321140
1"	399021321160
1-1/8"	399021321180
1-1/4"	399021321200
1-3/8"	399021321220
8-Jaw Kit	399031320801

### Klauke 19 kN Jaws

Size	Part Number
1/4"	399021191040
5/16"	399021191050
3/8"	399021191060
1/2"	399021191080
5/8"	399021191100
3/4"	399021191120
7/8"	399021191140
1"	399021191160
1-1/8"	399021191180
1-1/4"	399021191200
1-3/8"	399021191220
8-Jaw Kit	399031190801



### Accessory Kit:

- Tubing cutter
- RLS depth gauge
- RLS press gauge
- Permanent marker
- Wire Brush (for jaw cleaning)
- Abrasive pad
- Deburring tool

Accessory kit is included in both 19 kN tool kits. 32 kN 8-jaw kit includes the depth gauge, press gauge, marker, brush and abrasive pad (no cutter or deburring tool).





## Klauke® Tool and Jaw Kits



Each tool and jaw kit comes in a hard plastic carrying case. Tools sold in the United States include two batteries and a battery charger (not included in kits sold outside the U.S.) Batteries and chargers can be sourced from an RLS or Makita distributor.

### U.S. Part Numbers

*(Tools include 2 batteries and a charger.)*

**32 kN Tool (no jaws)**

**Part Number: 399011320001**

**19 kN Tool (no jaws)**

**Part Number: 399011190001**

**19 kN Tool and 5 Jaws**

**(3/8", 1/2", 5/8", 7/8", 1-1/8")**

**Part Number: 399011190501**

### International Part Numbers

*(Tools do not include batteries or charger.)*

**32 kN Tool (no jaws)**

**Part Number: 399011320002**

**19 kN Tool (no jaws)**

**Part Number: 399011190002**

**19 kN Tool and 5 Jaws**

**(3/8", 1/2", 5/8", 7/8", 1-1/8")**

**Part Number: 399011190502**

### Jaw Kits

**32 kN 8-Jaw Kit**

**(1/4", 3/8", 1/2", 5/8", 3/4", 7/8", 1-1/8", 1-3/8")**

**Part Number: 399031320801**

**19 kN 8-Jaw Kit**

**(1/4", 3/8", 1/2", 5/8", 3/4", 7/8", 1-1/8", 1-3/8")**

**Part Number: 399031190801**

## RIDGID® Jaws



Size	Part Number
1/4"	399022001040
5/16"	399022001050
3/8"	399022001060
1/2"	399022001080
5/8"	399022001100
3/4"	399022001120
7/8"	399022001140
1-1/8"	399022001180
1-3/8"	399022001220

### RIDGID 8-Jaw Set

The RIDGID 8-Jaw Set comes in a hard plastic carrying case and includes a tube cutter, deburring tools, press gauge, depth gauge, stainless steel brush, abrasive pad and permanent marker. Jaw sizes include 1/4", 3/8", 1/2", 5/8", 3/4", 7/8", 1-1/8" and 1-3/8". The 5/16" jaw is sold separately.

**Part Number: 399032000801**

**NOTE:** RIDGID press tools are sold through RIDGID distributors, available in lightweight pistol-grip and inline models.









## Accessories

Part Number	Description
399011000100	Klauke Replacement Tool Case
399031000100	Klauke Jaw Case
399032000100	RIDGID Jaw Case
399040307	1-1/4" Press Gauge
399040306	Press Gauge
399040308	Depth Gauge
399040301	Tube Cutter
399040302	Small Tube Deburring Tool (1/4" - 1-1/4")

Part Number	Description
399040309	Large Tube Deburring Tool (1/2" - 2")
399040303	Stainless Steel Brush
399040304	Abrasive Pad
399040305	Permanent Marker
399040101	Safety Kit (plastic bag, pen, instructions, crimp/depth gauges)
399040203	Makita 18V Charger - DC18RC
399040202	Makita 18V Battery - BL1815
399040201	Diagnostic tool - PGA1

# TOOLS, JAWS AND ACCESSORIES

## Tool and Jaw Compatibility Matrix – 1/4" to 1-3/8" Fittings

			JAW MANUFACTURER				
			Klauke®			RIDGID®	Milwaukee®
TOOL MANUFACTURER	Model(s)	Size Range	15 kN	19 kN	32 kN	24 kN	32 kN
	MAP2L	1/4" – 1-1/8"	✓				
	MAP2L19	1/4" – 1-3/8"		✓			
	UAP 332	1/4" – 1-3/8"			✓		✓
	UAP 432	1/4" – 1-3/8"			✓		✓
	Romax Compact	1/4" – 1-3/8"		✓			
	Romax 3000	1/4" – 1-3/8"			✓		✓
	Romax 4000	1/4" – 1-3/8"			✓		✓
	PC-20 M	1/4" – 1-1/8"	✓				
	RP 115	1/4" – 1-1/8"	✓				
	RP 200 RP 210 RP 240 RP 241	1/4" – 1-3/8"				✓	
	RP 330 RP 340 RP 350 RP 351	1/4" – 1-3/8"			✓		✓
	M12	1/4" – 1-3/8"				✓	
	M18 (excludes model 2674-20 short throw tool)	1/4" – 1-3/8"			✓		✓
	Pressgun Picco 6	1/4" – 1-3/8"				✓	
	Pressgun 6	1/4" – 1-3/8"			✓		✓
	ACO103	1/4" – 1-3/8"		✓			
	ACO203	1/4" – 1-3/8"			✓		✓
	ECO203	1/4" – 1-3/8"			✓		✓
	EFP203	1/4" – 1-3/8"			✓		✓
	DCE200	1/4" – 1-3/8"			✓		✓

Only RLS-approved tools and jaws can be used to install RLS fittings.



**Klauke® 32 kN Long-Throw Tool, Actuator and Collar Jaws (1-5/8" & 2-1/8")**



**32 kN Long-Throw Tool Features:**

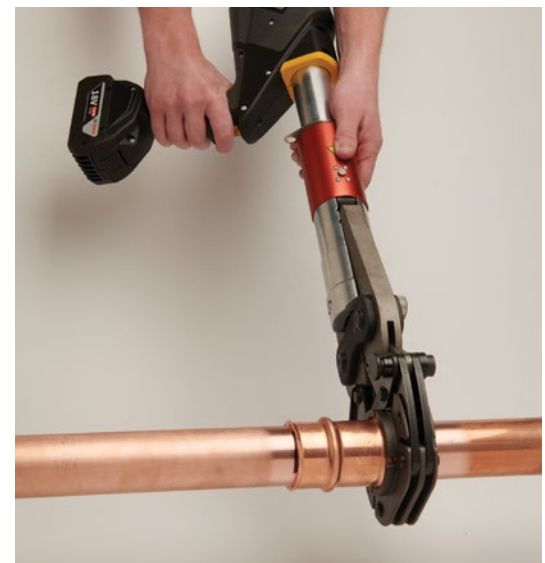
- Pressing Force: 32 kN
- Presses/charge: 350-400 (4.0 Ah)
- Battery Capacity:  
18V / 4.0 Ah Li-Ion Makita (BL1840B)
- Charging Time: 15 minutes
- Operating Temp. Range:  
-10°C to 40°C (14°F to 104°F)
- Weight with Battery: 4.4 kg (9.7 lb)
- Dimensions: 530 x 76 x 317 mm
- Part Number: 399011329900

**Benefits:**

- Fast pressing cycle of less than 25 seconds
- 350° tool rotation for flexibility
- Automatic retraction saves time on multiple presses
- High safety factor thanks to "Quickstop" function
- Precise pressing force with audible signal
- Long battery and tool service-life
- Tool information shown via OLED display or i-press® app
- High-quality, powerful Li-Ion technology for long lasting operation

**Accessories included with tool:**

- Depth/press gauge  
**Part Number: 399040501**
- Permanent marker
- Wire brush  
(for collar jaw cleaning)
- Abrasive pad



**Jaws:**

- 2-1/8" Collar Jaw**  
**Part Number: 399021321340**
- 1-5/8" Collar Jaw**  
**Part Number: 399021321260**
- Actuator Jaw**  
**Part Number: 399021321000**

Actuator Jaw is required and is used with both 1-5/8" and 2-1/8" collar jaws.

“Overall, we’ve seen that most of our project times have been cut in half using RLS fittings. On bigger jobs, where it might have taken us two weeks to pipe a job in the past, it’s only taken a week.”

– Alex Bishoff  
Howard Mechanical Services



# TECHNICAL DATA

## Applications

- High Pressure HVAC/R
- Ethylene Glycol
- Non-Potable Water

## Product Parameters

- Continuous Operating Temperature: 250°F / 121°C
- O-Ring Temperature Rating: -40°F to +300°F / -40°C to +149°C
- Maximum Allowable Working Pressure (MAWP): 700 psi / 48 bar
- Minimum Required Test Pressure (UL 207): 2,100 psi / 145 bar
- Vacuum Pressure Capability: <200 Microns
- External Helium Leak Rate: <7.5 x 10<sup>-7</sup> Pa·m<sup>3</sup>/s per ISO 14903
- Vibration Resistance: Conforms to UL 207
- Pull Test: Compliant with UL 207 for A1 fluids
- Size Availability (Inches): 1/4, 5/16, 3/8, 1/2, 5/8, 3/4, 7/8, 1, 1-1/8, 1-1/4, 1-3/8, 1-5/8, 2-1/8

## Fitting Materials

- Fitting Body: Refrigerant Grade Copper, per ASTM-B75 or ASTM-B743
- O-Ring: HNBR

## Compatibility

- Approved Oils: Mineral Oil, POE, PVE, PAG
- Approved Tubing Materials: Copper-to-Copper Connections
- Approved Tubing Tolerance: ASTM B88/B280, EN 12735 & AS/NZS 1571
- Approved Copper Tubing Types for 32 kN Tool/Jaws
  - Hard/Drawn: 1/4" - 2-1/8" Type ACR, L, K
  - Soft/Annealed: 1/4" - 1-3/8" Type ACR, L, K
- Approved Copper Tubing Types for 19 kN and 24 kN Tool/Jaws
  - Hard/Drawn: 1/4" - 1-3/8" Type ACR, L, K
  - Soft/Annealed: 1/4" - 1-3/8" Type ACR, L, K
- Approved Copper Tubing Types for 15 kN Tool/Jaws
  - Hard/Drawn: 1/4" - 1-1/8" Type ACR, L; 1/4" - 7/8" Type K
  - Soft/Annealed: 1/4" - 1-1/8" Type ACR, L; 1/4" - 7/8" Type K

## Agency Approvals and Certifications

- UL Listed: 207, SA#33958, SDTW (7) (Except where noted)
- UL Listed: Approved Use For Field & Factory Installations
- ISO 5149-2: Part 2 Compliant
- ASHRAE-15, ANSI 15, ASME B31.5 (504.7)
- ICC-ES, PMG-1296
- International Mechanical Code (IMC) 2021, 2018, 2015, 2012, 2009, 2006
- International Residential Code (IRC) 2021, 2018, 2015, 2012, 2009, 2006
- Uniform Mechanical Code (UMC) 2021, 2018, 2015, 2012, 2009, 2006
- CRN 0A22551 and 0A18303

## RLS Press Fitting Patents

- U.S. Patent No. 9,145,992
- U.S. Patent No. 9,638,361
- U.S. Patent No. D730,494
- Australian Patent No. 2012362443
- Brazilian Patent No. BR112014016012-0
- Canadian Patent No. 2,800,360
- Canadian Design Registration No. 149228
- EUIPO Registered Community Design No. 002218636-0001
- Japanese Patent No. 6051468
- Other Pending Patent Applications

## RLS Press Tools and Jaws Patents

- Australian Design Registration No. 361533
- Canadian Design Registration No. 161804
- EUIPO Registered Community Design No. 002672667-0001
- Japanese Design Registration No. 1537545
- Other Pending Patent Applications

**⚠ WARNING:** Some of our ancillary products can expose you to chemicals including lead, which is known to the State of California to cause cancer and birth defects or other reproductive harm. For more information go to [www.P65Warnings.ca.gov](http://www.P65Warnings.ca.gov).

**PROUDLY MADE  
IN AMERICA** 



Download  
the RLS  
Toolbox App!



Access  
Literature



[rapidlockingsystem.com](http://rapidlockingsystem.com)  
[training.rapidlockingsystem.com](http://training.rapidlockingsystem.com)

[info@rapidlockingsystem.com](mailto:info@rapidlockingsystem.com) • 314-907-0300

SEPT2023US