

# LoPro

## Commercial Series Air Curtains

**The Most Cost-Effective Environmental and Sanitation Barrier You'll Never See**

- 8" low profile
- Lightweight design
- Variable speed
- Easy to install and maintain
- Quiet operation
- Enhances sanitation
- Reduces energy costs

Mars LoPro maintains environmental separation with a light flow of air resulting in lowered energy costs and enhances sanitation by deterring flying insects.

### Commonly Used Applications

Customer Entrances, Drive-Up Windows, Concession Stands,  
Eliminates the Need for Plastic Strips over Walk-In Coolers



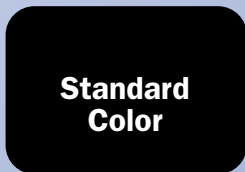
# Mars LoPro Commercial Models Comparison Chart

MODEL NUMBER	LENGTH OF UNIT	DOOR HEIGHT	AIR VELOCITY	AIR CFM	FLA (AMPACITY)		MOTOR H.P.	SOUND dBA	WEIGHT (lbs)
					115V	208V/240V			
LPV30/LPN30*	30	Up to 7 ft	1800	750	2.4 (3.0)	.9 (1.2)	1@1/6	49	28
LPV36/LPN36*	36	Up to 7 ft	1800	900	2.4 (3.0)	.9 (1.2)	1@1/6	49	34
LPV42/LPN42*	42	Up to 7 ft	1800	1050	2.4 (3.0)	.9 (1.2)	1@1/6	50	40
LPV48/LPN48*	48	Up to 7 ft	1800	1200	2.4 (3.0)	.9 (1.2)	1@1/6	52	45
LPV60/LPN60*	60	Up to 7 ft	1800	1500	2.6 (3.4)	1.3 (1.7)	1@1/6	53	55
LPV72/LPN72*	72	Up to 7 ft	1800	1800	2.6 (3.4)	1.3 (1.7)	1@1/6	53	68
LPV84-2/LPN84-2*	86	Up to 7 ft	1800	2100	4.8 (6.0)	1.8 (2.4)	2@1/6	51	80
LPV96-2/LPN96-2*	98	Up to 7 ft	1800	2400	4.8 (6.0)	1.8 (2.4)	2@1/6	53	92
LPV108-2/LPN108-2*	110	Up to 7 ft	1800	2700	5.0 (6.3)	2.2 (2.8)	2@1/6	54	100
LPV120-2/LPN120-2*	122	Up to 7 ft	1800	3000	5.2 (6.6)	2.6 (3.4)	2@1/6	54	112
LPV144-2/LPN144-2*	146	Up to 7 ft	1800	3600	5.2 (6.6)	2.6 (3.4)	2@1/6	54	135

\* LPN units are ETL Sanitation (NSF/ANSI 37) approved. Variable speed not available.

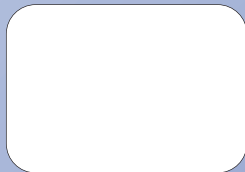


**TZ6112 Door Limit Switch** most commonly used for easy on/off control. See Fig 1 for typical installation.

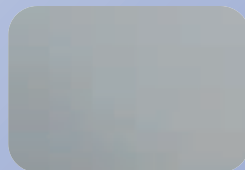


**Standard Color**

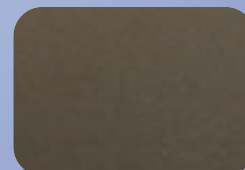
**Obsidian Black**



**Pearl White**



**Titanium Silver**



**Spartan Bronze**

### Typical Installation

1. Install mounting plate using the pre-drilled holes.
2. Securely attach cabinet to mounting plate using tabs as guides, when fully inserted secure with (2) #10-32 Pan Hd. "CAUTION: Unit to be mounted with the lowest moving part at 7 ft MAX above floor or grade level."
3. Install optional door limit switch(es) to door header.
4. Plug in unit using the 3 ft cord/plug supplied.

## Association Approvals

All Mars Air Systems products are manufactured using the best materials and components available. They are crafted by highly skilled, experienced tradespeople. Our products must pass stringent quality control standards. Mars Air Systems products are more durable, last longer and look better. Equally... they perform much better. For specific warranty information, please consult the factory.

Mars products meet the stringent listing or certification requirements of many organizations. The specifics vary depending on the model, options installed or application usage. Mars reserves the right to make improvements and changes to specifications without notice.



15842/MAR  
BuyLine 5152



*Mars Air Doors  
stabilize  
environments  
by controlling  
energy, climate,  
fumes, insects,  
and dust.*



**The best  
air curtains  
on earth  
come from**



**MARS AIR DOORS BRAND AIR CURTAINS**

**800-421-1266**

# Commercial Air Curtains



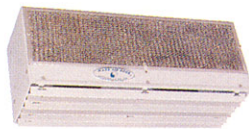
## Whispurr Air® Series



The Mars **Whispurr Air** Series air curtain does its job quietly and efficiently...evenly distributing a laminar air flow over entryways such as customer entrance doors in retail stores, walk-in coolers / freezers or restaurant drive-up service windows when continually in use or left open for extended periods. Ideal for office environments that must co-exist with adjoining factories. The unit features adjustable velocity settings that make it easy to repel windborne contaminants such as dust, fumes and pollutants under varying mild wind conditions. While acting as a protective shield, this versatile air curtain saves energy by reducing your air conditioning and heating system usage. The durable, high-impact PolyMars® cabinet acts as a sound dampener and won't rust or peel in humid or coastal climates.

You can install Mars **Whispurr Air** series air curtains inside heated or air-conditioned buildings. The largest unit weighs less than 28 pounds and all units come with a pre-engineered mounting bracket that makes installation fast and simple.

- MODELS AVAILABLE IN WIDTHS FROM 36" TO 72" & FOR DOOR HEIGHTS TO 7'
- LOW SOUND LEVEL
- HIGH AIR VELOCITY WITH VARIABLE SPEED MOTOR AND SWITCH FOR WIDE RANGE OF CONDITIONS
- 7-1/2" LOW PROFILE DESIGN PERFECT FOR RESTRICTED CEILING HEIGHT
- SPECIALLY FORMULATED POLYMARS® HOUSING MATERIAL FOR ADDED DURABILITY
- AUTOMATIC THERMAL OVERLOAD PROTECTION SAFEGUARDS MOTOR FROM BURNOUT, MINIMIZES MAINTENANCE COSTS
- DYNAMICALLY BALANCED NYLON BLOWER WHEELS, FOR DURABILITY AND QUIET OPERATION
- OPTIONAL DOOR ACTIVATED MICRO SWITCH FOR AUTOMATIC ON/OFF CONTROL
- STANDARD WHITE, WITH CUSTOM COLORS AVAILABLE
- ELECTRICALLY HEATED MODELS AVAILABLE



## Service Window W-25 Series

Compact and convenient, the Mars **Service Window W-25** Model air curtain creates an advanced air barrier to insects, dust and fumes without disturbing customers or employees. Designed for fast food drive-thru windows, dairy and ice cream stores, hamburger stands, schools, drive-thru banks, cleaners, and other businesses, the **W-25** provides an unobstructed view while it maintains clean, sanitary conditions.

No remodeling or expensive installation is needed for this versatile air curtain, which mounts inside or outside the exterior wall. Mounting holes on brackets simplify installation even more.

Both unheated and electrically heated units are offered. All feature a high-impact white PolyMars® exterior cabinet. Electrically heated units feature a variable speed motor and switch for enhanced in-service control.

Specially designed to comply with all local health department regulations. Meets all NSF standards (unheated only).



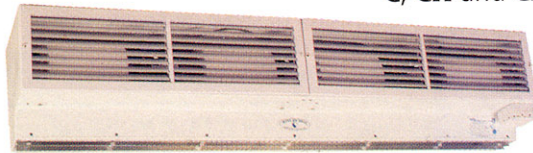
- UNIT IS 25" WIDE FOR WINDOW HEIGHTS UP TO 5'
- UNOBTRUSIVE STREAM OF AIR KEEPS OUT INSECTS, DUST AND FUMES
- IDEALLY SUITED FOR ALL DRIVE-THRU BUSINESSES, SCHOOLS AND FOOD STANDS
- FEATURES WASHABLE AIR FILTER
- HEATED AND UNHEATED VERSIONS, FOR PERFORMANCE IN ALL CLIMATES AND SEASONS
- RUGGED POLYMARS EXTERIOR CABINET

**800-421-1266**

14716 S. BROADWAY, GARDENA, CA 90248  
TEL: 310-532-1555 FAX: 310-324-3030

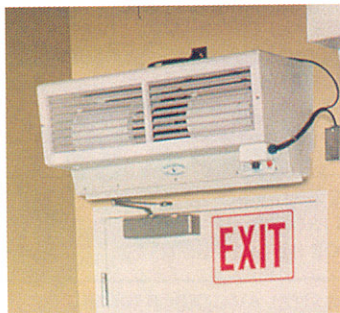


## C, CH, CHS and COMBI® Series



**"In the eight or nine years that we've been working with Mars Air Door for installations throughout New England, we've been very pleased with the quality of the product, the fast delivery, the price and the company's eagerness to help in every way. It's no wonder they're the industry leader."**

— Steve Ginns, President  
S.J. Ginns & Associates, Boston, MA



For your added convenience, Mars offers **C, CH** and **CHS** Series air curtains, which are similar in design and construction except for differences in outlet air flow and motor capacity. All of these commercial grade air curtains provide dependable climate, insect and energy control for a variety of settings, from receiving doors and cold storage doors, to entrances for office buildings, department stores and supermarkets. Depending upon the height of your doorway and the air flow required, one of these three series of models will provide a solid solution.

The **C** Model, designed to mount over customer entrances, creates a mild, curtain of air undetected by customers walking through the doorway. It acts as a continual barrier against outside climate to maintain the desired interior temperature. The unit also prevents loss of refrigerated air and reduces humidity or ice buildup when installed over doors on freezer or cooler rooms.

The **CH** and **CHS** Models produce a greater velocity of air flow. Recommended for above average insect conditions, the **CH** and **CHS** Models are highly effective in large markets, restaurants, hospitals, food processing plants and schools.

The **C, CH** and **CHS** are offered in heated and unheated versions. Adjustable vanes at the outlet nozzle make it possible to direct the air where needed most and to compensate for possible draft conditions through open doorways. These easy-to-install units create productive environments in so many important ways.

The ultimate in application flexibility, the Mars **Combi**® series of unheated air curtains is actually, as the name implies, a combination of the **C** and **CH** or the **CH** and **CHS** models. It provides different applications at the turn of a switch for customer entrance doors, its flexibility compensates for varying wind conditions and prevents loss of conditioned air, controls flying insects and protects against dust, fumes and odors. When installed above a cooler/freezer cold storage door, its flexibility is effective in preventing the loss of refrigerated air and reducing humidity and ice buildup inside

- 36" TO 96" AND FOR DOOR HEIGHTS UP TO 12'
- KEEPS OUT INSECTS, DUST AND FUMES
- REDUCES HUMIDITY & LOSS OF COLD AIR FROM OPEN FREEZER AND COOLER DOORS
- LOWERS BUILDING HEATING AND COOLING COSTS
- MAINTAINS CLEAN, SANITARY PREMISES
- ALLOWS DOORS TO REMAIN OPEN WHICH IS CONDUCTIVE TO ATTRACTING CUSTOMERS
- ELIMINATES NUISANCE OF OPENING AND CLOSING DOORS, WHICH CAN HAMPER PRODUCTIVITY
- PROVIDES EASIER FLOW OF CUSTOMERS OR PERSONNEL TRAFFIC
- INSTALLS EASILY
- FOUR DIFFERENT MODELS ADAPT TO YOUR SPECIFIC ENVIRONMENT
- STANDARD WHITE OR CUSTOM COLORS AVAILABLE
- ELECTRICALLY HEATED MODELS AVAILABLE IN C, CH AND CHS

the cold storage room. The medium speed setting is used for the same applications and provides the same benefits as the low speed setting, but for slightly taller door openings.

The high speed setting, utilized for applications such as receiving or service doors, works especially well for extreme insect conditions or where large openings enable substantial amounts of air to enter.

The **Combi** Models have proven themselves in a diversity of situations, including restaurants, shopping malls, drug stores, hospitals, office buildings, hotels, food processing plants and storage areas, to name just a few. When you need to combine the performance of single speed models into one unit, the **Combi** series provides excellent flexibility for installing in various locations.

**800-421-1266**

14716 S. BROADWAY, GARDENA, CA 90248  
TEL: 310-532-1555 FAX: 310-324-3030

# Industrial Air Curtains



## Standard, HV and EP Series



**"Mars basically designed the air curtain product and they've really perfected it over the years, which makes it easy to sell. The service is excellent because there's always product in stock and knowledgeable people available to answer any questions at a moment's notice."**

— Ted Ryback, Sales Manager  
AMECO, Distributor  
Los Angeles, CA

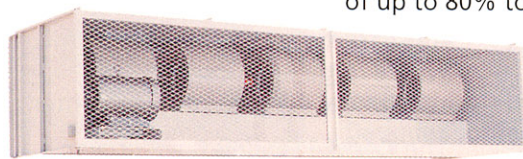
Built for the widest possible number of uses, Mars **Standard**, **High Velocity** (HV) and **Extra Power** (EP) Series air curtains efficiently keep dirt, dust and insects out of your food facilities and other areas requiring a clean environment. These compact, unobtrusive units are popular for meat packing and food processing plants, supermarkets and commissaries, breweries, restaurants, schools, hospitals and cold storage plants. They are highly effective over large cold storage doors where they reduce humidity and ice buildup and seal in cold air. This results in substantial energy savings by preventing excessive operation of your refrigeration system.

The self-contained one piece metal housings are corrosion-proof and fire-retardant. They are very easy to install and designed for fastening to the wall on both ends without any intermediate support.

- MODELS ARE AVAILABLE IN WIDTHS FROM 28" UP TO 12' AND FOR DOOR HEIGHTS UP TO 16'
- CREATES PROTECTIVE AIR BARRIER AGAINST DUST, POLLENS AND INSECTS
- MAINTAINS DESIRED INTERIOR TEMPERATURE FOR MORE COMFORTABLE WORKING CONDITIONS
- LIMITS ENTRY OF WARM, MOIST AIR INTO COLD STORAGE ROOMS WHEN DOORS ARE OPEN
- MINIMIZES REFRIGERATION SYSTEM OVERLOAD
- ELIMINATES NEED FOR EXPENSIVE FLAPPER DOOR OR PLASTIC STRIP CURTAINS
- PREVENTS POSSIBILITY OF ACCIDENTS BY PROVIDING UNOBSTRUCTED VIEW OF PASSAGEWAY
- HEATED MODELS AVAILABLE WITH ELECTRIC, GAS, STEAM AND HOT WATER
- OPTIONAL: EXTENDED MOUNTING BRACKETS ARE OFFERED TO CLEAR ROLL-UP DOOR HOUSING OR OTHER OBSTRUCTIONS.



## WindGuard Series



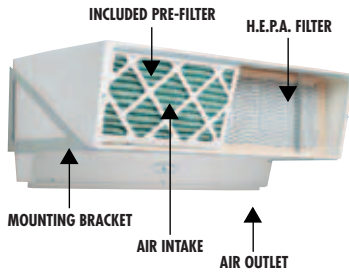
The Mars **WindGuard** Heavy Duty Industrial Air Curtain can provide impressive energy savings of up to 80% to 90% in working environments where doors are left open for more than 10% of the time during business hours. Custom engineered for industrial applications such as manufacturing plants, warehouses, transportation terminals, hospitals and food processing plants, **WindGuard** repels wind gusts up to 30 miles per hour. A special field-adjustable internal damper provides control for the proper velocity of air while a hand-adjustable nozzle directs air flow to compensate for varying wind loads.

This efficient energy-saving unit is designed for dependable operation. The internally mounted motor eliminates the need for a belt guard and enables the motor to be cooled by the blower wheels. An easily removable inlet screen allows full access to fans, motor and driver assembly. As versatile as it is functional, **WindGuard** mounts easily over a wide range of door types.

- MODELS AVAILABLE IN ONE PIECE WIDTHS FROM 8' UP TO 16' AND FOR DOOR HEIGHTS UP TO 22'
- CUSTOM SIZES AVAILABLE
- SAVES DRAMATICALLY ON ENERGY USAGE AND REDUCES WEAR ON BOTH HEATING AND COOLING SYSTEMS
- CREATES AN "INVISIBLE DOOR" THAT IS ABLE TO DEFLECT WIND GUSTS UP TO 30 MPH
- FIELD-ADJUSTABLE INTERNAL DAMPER REGULATES PROPER VELOCITY OF AIR
- HAND-ADJUSTABLE DISCHARGE NOZZLE DIRECTS AIR FLOW TO COMPENSATE FOR DIFFERENT WIND LOADS
- INTERNAL FRAME OF STEEL TUBING GIVES UNIT MAXIMUM STRUCTURAL STRENGTH
- HEATED MODELS AVAILABLE WITH ELECTRIC, GAS, STEAM AND HOT WATER
- INTERNALLY MOUNTED MOTOR ELIMINATES NEED FOR BELT GUARD AND ENABLES THE MOTOR TO BE COOLED BY THE BLOWER WHEELS
- ALL WINGAURD MODELS HAVE AN 18 MONTH PARTS GUARANTEE

**800-421-1266**

14716 S. BROADWAY, GARDENA, CA 90248  
TEL: 310-532-1555 FAX: 310-324-3030



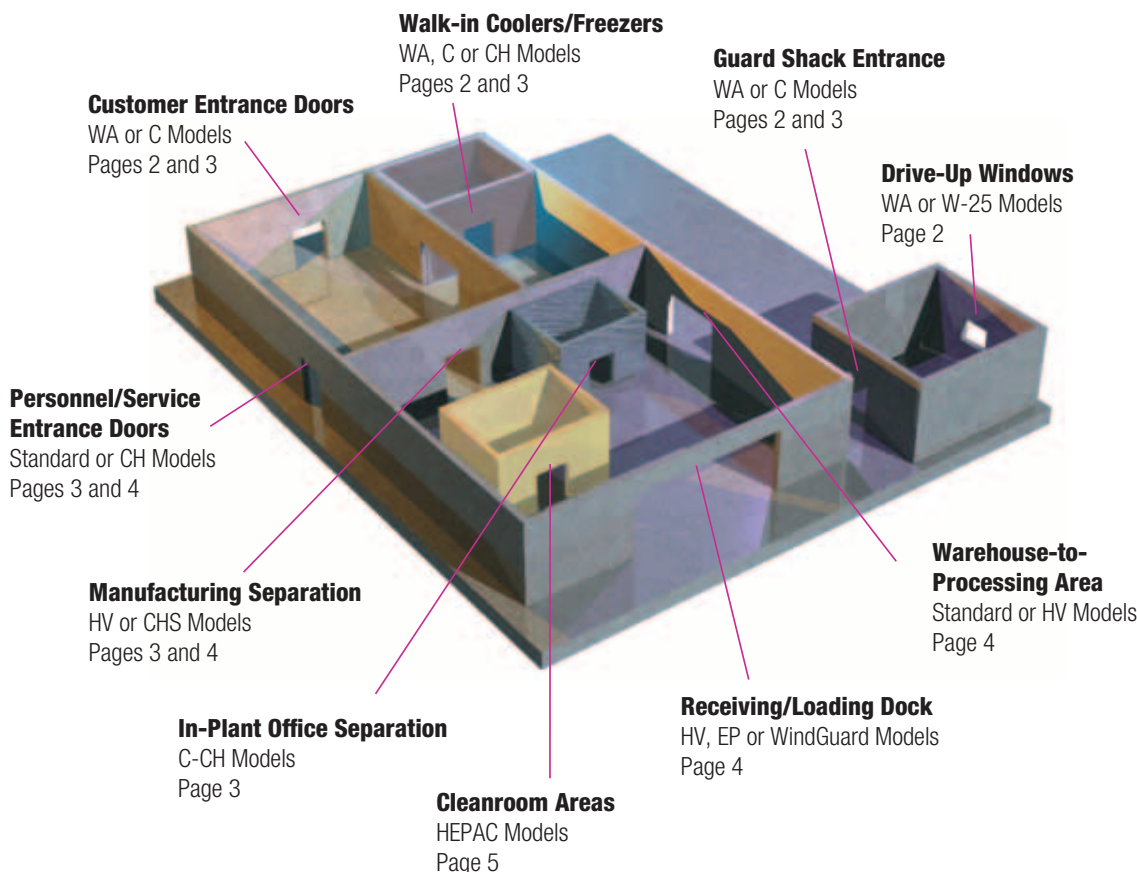
The Mars **Hepac** Air Curtain, featuring H.E.P.A. (High Efficiency Particulate Air) filters, effectively removes airborne contaminants to meet even the most rigid military, federal and health standards. This gentle moving air barrier provides a downflow curtain of ultra-clean air when installed over open doorways isolating your outside contaminated areas while it filters air inside the room for double protection.

From dust and bacteria, to molds, pollens and tobacco smoke, the Mars **Hepac** Air Curtain is rated at a 99.97% efficiency level. It removes virtually any airborne particle down to 0.3 microns, which is more than 30 times smaller than is visible to the naked eye. The Mars **Hepac** Air Curtain is an important and effective first line of defense to any cleanroom environment. These completely self-contained units are comprised of a blower fan, H.E.P.A. filter and pre-filter which provide an effective barrier for minimizing contamination in medical and pharmaceutical facilities, electronic assembly rooms, veterinary laboratories, hospital operating rooms, photographic laboratories, or wherever a particle-free environment is critical.

The Mars **Hepac** Air Curtain will lower your overall cleanroom maintenance costs by helping to keep H.E.P.A. filters clean, thus lengthening service time between expensive filter replacement.

Be certain with the Mars **Hepac** Air Curtain — engineered for years of maintenance-free service.

- 40" WIDE FOR DOOR HEIGHTS UP TO 8'
- REMOVES DUST, BACTERIA, MOLDS, POLLEN AND SMOKE
- CREATES STRONG DETERRENT TO INSECTS
- MAINTAINS DESIRED INTERIOR TEMPERATURE
- CONSTANTLY FILTERS AIR FOR ACTIVE PURIFICATION
- ADJUSTABLE LOUVERS AT AIR INTAKE TO CONTROL AIR VELOCITY
- OPERATES QUIETLY TO ENHANCE WORK ENVIRONMENT
- SUPPLIED WITH A WALL MOUNTING BRACKET FOR FAST & EASY INSTALLATION
- CAN ALSO FUNCTION AS BENCH MODEL FOR WHEELING FROM ROOM TO ROOM
- DOP TEST-APPROVED H.E.P.A. FILTERS AND PATENTED DESIGN CREATE EXTRA LINE OF DEFENSE



Visit our website  
[www.marsair.com](http://www.marsair.com)

- UTILIZE OUR INTERACTIVE APPLICATION SELECTION GUIDE (RMAPS).
- DOWNLOAD DETAILED PRODUCT CAD DRAWINGS, AND TECHNICAL SPECIFICATIONS.
- CONTACT US TO REQUEST "STATE OF THE ART" RETURN ON INVESTMENT (ROI) SOFTWARE.
- EXPLORE ALL THREE DIVISIONS OF MARS AIR SYSTEMS. BROWSE OUR ENTIRE FAMILY OF PRODUCTS.



**800-421-1266**

14716 S. BROADWAY, GARDENA, CA 90248  
TEL: 310-532-1555 FAX: 310-324-3030



# Commercial Models Comparison Chart

MODEL	DOOR WIDTH INCHES	DOOR HEIGHT FEET	AIR VELOCITY FPM @ NOZZLE (MAX)	AIR VOLUME CFM @ NOZZLE	FULL LOAD AMPS		MOTOR HORSE POWER	dBA SOUND PRESSURE LEVEL (NOTE: 3)	NET WT. LBS (UNHEATED)	ELECTRIC HEAT AVAILABLE (NOTES: 4 & 5)
					1 PHASE 208/230V (NOTE: 1)	3 PHASE 480V (NOTE: 2)				
<b>WHISPURR AIR MODELS</b>										
<b>1550 RPM</b>										
WA 36	36	UP TO 7	1800	900	0.9	NA	1 @ 1/6	49	16	X
WA 42	42	UP TO 7	1800	1050	0.9	"	1 @ 1/6	50	19	X
WA 48	48	UP TO 7	1800	1200	0.9	"	1 @ 1/6	52	22	X
WA 60	60	UP TO 7	1800	1500	1.3	"	1 @ 1/6	52	25	X
WA 72	72	UP TO 7	1800	1800	1.3	"	1 @ 1/6	53	28	X
<b>C MODELS</b>										
<b>1750 RPM</b>										
36C	36	UP TO 8	2275	1700	2.5	0.8	1 @ 1/2	56	50	X
38C	38	UP TO 8	2150	1700	2.5	0.8	1 @ 1/2	56	52	X
42C	42	UP TO 8	1950	1700	2.5	0.8	1 @ 1/2	56	55	X
48C	48	UP TO 8	1700	1700	2.5	0.8	1 @ 1/2	56	60	X
60C	60	UP TO 8	2040	1700	2.5	0.8	1 @ 1/2	56	65	X
60C-2	60	UP TO 8	2720	3440	5.0	1.6	2 @ 1/2	63	95	X
72C-2	72	UP TO 8	2275	3440	5.0	1.6	2 @ 1/2	63	105	X
96C-2	96	UP TO 8	1700	3440	5.0	1.6	2 @ 1/2	63	130	X
<b>CH MODELS</b>										
<b>1750 RPM</b>										
36CH	36	8-10	3400	2550	2.5	0.8	1 @ 1/2	63	50	X
38CH	38	8-10	3225	2550	2.5	0.8	1 @ 1/2	63	52	X
42CH	42	8-10	2925	2550	2.5	0.8	1 @ 1/2	63	55	X
48CH	48	8-10	2550	2550	2.5	0.8	1 @ 1/2	63	60	X
60CH-2	60	8-10	4080	5100	5.0	1.6	2 @ 1/2	65	95	X
72CH-2	72	8-10	3400	5100	5.0	1.6	2 @ 1/2	65	105	X
96CH-2	96	8-10	2550	5100	5.0	1.6	2 @ 1/2	65	130	X
<b>CHS MODELS</b>										
<b>1750 RPM</b>										
42CHS	42	10-12	4600	4000	8.0	2.0	1 @ 1	69	80	X
48CHS	48	10-12	4000	4000	8.0	2.0	1 @ 1	69	85	X
60CHS	60	10-12	3200	4000	8.0	2.0	1 @ 1	69	90	X
96CHS-2	96	10-12	4000	8000	16.0	4.0	2 @ 1	72	160	X
<b>COMBI MODELS</b>										
<b>1750 RPM</b>										
36 COMBI	36	UP TO 10	2275/3400	1700/2375	2.5	NA	1 @ 1/2	56/63	50	NA
38 COMBI	38	UP TO 10	2150/3225	1700/2375	2.5	"	1 @ 1/2	56/63	52	"
42 COMBI	42	UP TO 10	1950/2925	1700/2375	2.5	"	1 @ 1/2	56/63	55	"
48 COMBI	48	UP TO 10	1700/2550	1700/2375	2.5	"	1 @ 1/2	56/63	60	"
60 COMBI	60	UP TO 10	1360/2040	1700/2375	2.5	"	1 @ 1/2	56/63	65	"
60-2 COMBI	60	UP TO 10	2720/4080	3400/5100	5.0	"	2 @ 1/2	59/65	95	"
72-2 COMBI	72	UP TO 10	2275/3400	3400/5100	5.0	"	2 @ 1/2	59/65	105	"
96-2 COMBI	96	UP TO 10	1700/2550	3400/5100	5.0	"	2 @ 1/2	59/65	130	"
<b>SUPER COMBI MODELS</b>										
<b>1750 RPM</b>										
42 SUPER COMBI	42	10-12	3200/4600	2800/4000	5.0	NA	1 @ 1	65/69	80	NA
48 SUPER COMBI	48	10-12	2800/4000	2800/4000	5.0	"	1 @ 1	65/69	85	"
60 SUPER COMBI	60	10-12	2240/3200	2800/4000	5.0	"	1 @ 1	65/69	90	"
96-2 SUPER COMBI	96	10-12	2800/4000	5600/8000	10.0	"	2 @ 1	68/72	160	"
<b>NATIONAL SANITATION FOUNDATION MODELS</b>										
<b>1750 RPM</b>										
36 NCH	36	UP TO 7	3400	2550	2.5	0.8	1 @ 1/2	63	50	NA
38 NCH	38	UP TO 7	3225	2550	2.5	0.8	1 @ 1/2	63	52	"
42 NCH	42	UP TO 7	2925	2550	2.5	0.8	1 @ 1/2	63	55	"
48 NCH	48	UP TO 7	2550	2550	2.5	0.8	1 @ 1/2	63	60	"
72 NCH-2	72	UP TO 7	3400	5100	5.0	1.6	2 @ 1/2	65	105	"
NHV 42	42	UP TO 7	4600	4000	8.0	2.0	1 @ 1	69	80	"
NHV 48	48	UP TO 7	4000	4000	8.0	2.0	1 @ 1	69	85	"
<b>SERVICE WINDOW MODEL W-25</b>										
<b>3450 RPM</b>										
W25	30	UP TO 5	1400	1900	1.3/1.7	NA	1 @ 1/5	59	20	X
<b>HEPAC</b>										
<b>1750 RPM</b>										
HF40	40	UP TO 8	2175	1800	2.5	0.6	1 @ 1/2	56	125	NA

- NOTES:**
- 1.SINGLE PHASE FULL LOAD CURRENT FOR 208/230V SHOWN; FOR 115V SINGLE PHASE, MULTIPLY BY 2. FOR AMPACITY MULTIPLY CURRENT BY 1.25.
  - 2.THREE PHASE FULL LOAD CURRENT FOR 480V SHOWN; FOR 208/230V THREE PHASE, MULTIPLY BY 2. FOR AMPACITY MULTIPLY CURRENT BY 1.25.
  - 3.THE dBA IS MEASURED IN FREE AIR 10 FEET FROM THE NOZZLE.
  - 4.HEAT NOT AVAILABLE WITH 115V, SINGLE PHASE AIR CURTAINS.
  - 5.COMMERCIAL MODELS AVAILABLE IN ELECTRIC HEAT ONLY.

**GENERAL NOTES:** SPECIFY VOLTAGE AND PHASE WHEN ORDERING. ELECTRIC MOTORS ARE AVAILABLE IN ANY OTHER VOLTAGES, PHASES AND FREQUENCIES.

TO SAVE ON ENERGY A MICRO SWITCH IS OFFERED ON ALL MODELS. IT AUTOMATICALLY ENERGIZES THE AIR CURTAIN WHEN THE DOOR IS OPEN AND STOPS WHEN DOOR CLOSES. HIGHLY RECOMMENDED WHEN ORDERING AN **AIR CURTAIN**.





# Industrial Models Comparison Chart

MODEL	DOOR WIDTH INCHES	DOOR HEIGHT FEET	AIR VELOCITY FPM @ NOZZLE (MAX)	AIR VOLUME CFM @ NOZZLE	FULL LOAD AMPS		MOTOR HORSE POWER	SOUND PRESSURE LEVEL (NOTE: 3)	NET WT. LBS. (UNHEATED)	HEATING OPTION			
					1 PHASE 208/230V (NOTE: 1)	3 PHASE 480V (NOTE: 2)				GAS	ELECTRIC (NOTE: 4)	HOT WATER	STEAM
<b>STANDARD MODELS</b>													
<b>1750 RPM</b>													
28	28	UP TO 8	3275	1900	1.8	0.5	1 @ 1/3 @ 3450 RPM	66	50	NA	NA	NA	NA
36	36	UP TO 8	3400	2550	2.5	0.8	1 @ 1/2	66	75	"	X	X	X
42	42	UP TO 8	2925	2550	2.5	0.8	1 @ 1/2	66	80	"	X	X	X
48	48	UP TO 8	2550	2550	2.5	0.8	1 @ 1/2	66	90	"	X	X	X
60	60	UP TO 8	2040	1700	2.5	0.8	1 @ 1/2	56	60	"	X	X	X
60-2	60	UP TO 8	3040	3800	3.5	1.0	2 @ 1/3 @ 3450 RPM	68	95	"	X	NA	NA
64-(Note:5)	64	UP TO 8	3700	5100	5.0	1.6	2 @ 1/2	65	110	"	X	X	X
72-2	72	UP TO 8	3475	5100	5.0	1.6	2 @ 1/2	68	135	"	X	X	X
78-2	78	UP TO 8	3200	5100	5.0	1.6	2 @ 1/2	68	145	"	X	X	X
84-2	84	UP TO 8	2925	5100	5.0	1.6	2 @ 1/2	68	150	"	X	X	X
96-2	96	UP TO 8	2550	5100	5.0	1.6	2 @ 1/2	68	160	"	X	X	X
96-3	96	UP TO 8	3825	7650	7.5	2.4	3 @ 1/2	71	200	"	X	X	X
108-3	108	UP TO 8	3400	7650	7.5	2.4	3 @ 1/2	71	210	"	X	X	X
120-3	120	UP TO 8	3060	7650	7.5	2.4	3 @ 1/2	71	220	"	X	X	X
144-3	144	UP TO 8	2550	7650	7.5	2.4	3 @ 1/2	71	240	"	X	X	X
144-4	144	UP TO 8	3400	10,200	10.0	3.2	4 @ 1/2	73	280	"	NA	X	X
<b>HV MODELS</b>													
<b>1750 RPM</b>													
48HV	48	8-12	4000	4000	8.0	2.0	1 @ 1	70	120	X	X	X	X
60HV	60	8-12	3200	4000	8.0	2.0	1 @ 1	70	140	X	X	X	X
72HV-2	72	8-12	5140	8000	16.0	4.0	2 @ 1	73	200	X	X	X	X
84HV-2	84	8-12	4570	8000	16.0	4.0	2 @ 1	73	210	X	X	X	X
96HV-2	96	8-12	4000	8000	16.0	4.0	2 @ 1	73	225	X	X	X	X
108HV-2	108	8-12	3555	8000	16.0	4.0	2 @ 1	73	235	X	X	X	X
108HV-3	108	8-12	4800	10,000	24.0	6.0	3 @ 1	73	250	X	X	X	X
120HV-2	120	8-12	3200	8000	16.0	4.0	2 @ 1	75	275	X	X	X	X
120HV-3	120	8-12	4800	12,000	24.0	6.0	3 @ 1	75	300	X	X	X	X
144HV-3	144	8-12	4000	12,000	24.0	6.0	3 @ 1	75	310	X	X	X	X
<b>EP MODELS</b>													
<b>3450 RPM</b>													
EP 48	48	12-16	4800	4800	15.0	4.0	1 @ 3	76	120	NA	X	X	X
EP 60	60	12-16	3840	4800	15.0	4.0	1 @ 3	76	155	NA	X	X	X
EP 72-2	72	12-16	6100	9600	30.0	8.0	2 @ 3	79	185	X	X	X	X
EP 84-2	84	12-16	5485	9600	30.0	8.0	2 @ 3	79	195	X	X	X	X
EP 96-2	96	12-16	4800	9600	30.0	8.0	2 @ 3	79	225	X	X	X	X
EP 108-2	108	12-16	4200	9600	30.0	8.0	2 @ 3	79	275	X	X	X	X
EP 108-3	108	12-16	4800	12,800	45.0	12.0	3 @ 3	81	300	X	X	X	X
EP 120-2	120	12-16	3840	9600	30.0	8.0	2 @ 3	79	250	X	X	X	X
EP 120-3	120	12-16	5760	14,400	45.0	12.0	3 @ 3	81	310	X	X	X	X
EP 144-3	144	12-16	4800	14,400	45.0	12.0	3 @ 3	81	330	X	X	X	X
<b>WINDGUARD MODELS</b>													
<b>1500 RPM (MAX.)</b>													
BD-14-096-XX	96	10-14	4500	11,700	NA	7.5	1 @ 5	73	600	X	X	X	X
BD-14-120-XX	120	10-14	4500	14,650	"	7.5	1 @ 5	73	700	X	X	X	X
BD-14-144-XX	144	10-14	4500	17,600	"	11.0	1 @ 7 1/2	74	800	X	X	X	X
BD-14-168-XX	168	10-14	4500	20,500	"	11.0	1 @ 7 1/2	74	925	X	X	X	X
BD-14-192-XX	192	10-14	4500	23,400	"	14.0	1 @ 10	75	1000	X	X	X	X
BD-18-096-XX	96	14-18	5100	13,800	"	11.0	1 @ 7 1/2	74	620	X	X	X	X
BD-18-120-XX	120	14-18	5100	17,255	"	11.0	1 @ 7 1/2	75	725	X	X	X	X
BD-18-144-XX	144	14-18	5100	20,700	"	14.0	1 @ 10	75	850	X	X	X	X
BD-18-168-XX	168	14-18	5100	24,100	"	14.0	1 @ 10	76	975	X	X	X	X
BD-18-192-XX	192	14-18	5100	27,600	"	21.0	1 @ 15	76	1100	X	X	X	X
BD-22-096-XX	96	18-22	6000	16,250	"	14.0	1 @ 10	75	650	X	X	X	X
BD-22-120-XX	120	18-22	6000	20,300	"	21.0	1 @ 15	76	775	X	X	X	X
BD-22-144-XX	144	18-22	6000	24,350	"	21.0	1 @ 15	76	900	X	X	X	X
BD-22-168-XX	168	18-22	6000	28,400	"	27.0	1 @ 20	77	1050	X	X	X	X
BD-22-192-XX	192	18-22	6000	32,500	"	27.0	1 @ 20	77	1180	X	X	X	X
<b>NATIONAL SANITATION FOUNDATION MODELS</b>													
<b>1750 RPM</b>													
36 NCH	36	UP TO 7	3400	2550	2.5	0.8	1 @ 1/2	63	50	NA	NA	NA	NA
38 NCH	38	UP TO 7	3225	2550	2.5	0.8	1 @ 1/2	63	52	"	"	"	"
42 NCH	42	UP TO 7	2925	2550	2.5	0.8	1 @ 1/2	63	55	"	"	"	"
48 NCH	48	UP TO 7	2550	2550	2.5	0.8	1 @ 1/2	63	60	"	"	"	"
72-2 NCH	72	UP TO 7	3400	5100	5.0	1.6	2 @ 1/2	65	105	"	"	"	"
NHV 42	42	UP TO 7	4600	4000	8.0	2.0	1 @ 1	69	80	"	"	"	"
NHV 48	48	UP TO 7	4000	4000	8.0	2.0	1 @ 1	69	85	"	"	"	"

- NOTES:**
1. SINGLE PHASE FULL LOAD CURRENT FOR 208/230V SHOWN; FOR 115V SINGLE PHASE, MULTIPLY BY 2. FOR AMPACITY MULTIPLY CURRENT BY 1.25.
  2. THREE PHASE FULL LOAD CURRENT FOR 480V SHOWN; FOR 208/230V THREE PHASE, MULTIPLY BY 2. FOR AMPACITY MULTIPLY CURRENT BY 1.25.
  3. THE dBA IS MEASURED IN FREE AIR 10 FEET FROM THE NOZZLE.

4. HEAT NOT AVAILABLE WITH 115V, SINGLE PHASE AIR CURTAINS.
  5. AVAILABLE WITH ONE OR TWO 1/2 HP MOTORS. SPECIFY AS -1 OR -2 RESPECTIVELY.
- GENERAL NOTES:** SPECIFY VOLTAGE AND PHASE WHEN ORDERING. ELECTRIC MOTORS ARE AVAILABLE IN ANY OTHER VOLTAGES, PHASES AND FREQUENCIES.

## Mars is Committed to Better Products

Mars Air Doors builds solid products and also solid relationships. Since 1962 when Martin Smilo introduced his air curtain design and opened the doors for business, Mars has taken a leadership position by listening to customers like you and responding with solutions. The largest manufacturer of air curtains in the world, we represent, distribute, service and sell our products on a global scale for all climates and environmental conditions.

Should you have special requirements for unique or custom applications, we have the capability to meet your needs.



## Mars Quick Ship Program

For your convenience we stock a huge quantity of Mars Air Doors. The bulk of orders ship out rapidly, normally within 3-5 working days. However, under most circumstances, we can ship same day should you need such service. Please make sure to ask your Mars Customer Service Representative for details.

**Mars Air Doors has the longest parts guarantee in the industry. This attests to our faith that you will have trouble-free performance for many years.**

**"Now all 24 dock doors have a Mars® air curtain. This makes the system very flexible and versatile. We now maintain steady temperatures, even on the hottest and coldest days. Before this installation, one of our shipping department's computers literally froze. That's not a problem anymore. An unexpected benefit was the measurable improved quality of our finished laminate products."**

—Tim Shay  
Mgr. Manufacturing Engineering,  
Shrock Cabinet Co., Arthur IL

## Association Approvals

Mars products meet the stringent listing or certification requirements of many organizations. The specifics vary depending on the model, options installed or application usage.



Mars reserves the right to make improvements and changes to specifications without notice.  
©2002 MARS SALES COMPANY, GARDENA, CALIFORNIA. ALL RIGHTS RESERVED.

**"The people at Kwikset are ecstatic about the temperature control from the Mars system. It's improved their comfort level, increased productivity and reduced absenteeism. As for me, I wouldn't go to any other manufacturer. The Mars people are true professionals."**

— Dennis Starr  
Starr State Air, installer of Mars air curtains for  
Kwikset Corp., Anaheim, CA

## Gas, Electric, Hot Water or Steam?

**Q: Do We really need a heated air curtain?**

**A:** The answer is maybe not. Your Mars® Air Doors effectively creates an efficient insulation barrier between two environments. It's approximately 80% - 90% efficient. It does so by creating a stiff blast of air blowing down from the unit towards the floor. This blast of air creates an invisible barrier separating the two environments.

If you have people working near or walking through this moving air, they may feel a breeze. This could cause a wind chill effect, similar to the cooling effects of a blowing fan during the summer. Adding a heated air curtain unit will minimize this effect and make for a comfortable and more productive work place for your employees and customers.

Should your facility be located in a cold weather environment creating significant temperature differences between the outside versus the inside temperature, a Mars® Air Doors heated unit will significantly improve the work environment comfort level and help maintain consistent temperature control. In addition, it will reduce overall utility and maintenance costs by providing a more constant inside temperature.

**Q: We've decided that we need a heated unit, which one do we choose; gas, electric, hot water or steam?**

**A:** The general rule of thumb is to choose the same type of heat used to heat your facility, however, there may be some exceptions. For example; should your facility be steam heated, but connecting to the steam lines is too far, inconvenient or too expensive, it may be more feasible to choose gas or electric. — To assure installing the correct heating method and proper heating outputs for you, we highly recommend consulting with your Mars factory representatives first for proper selection.



## Control Panels Available

UL Listed and CSA certified electrical control panels for air curtain applications ensure easy installation, long life and safe operation.

**800-421-1266**  
A World of Smart Choices From



14716 S. BROADWAY, GARDENA, CA 90248  
TEL: 310-532-1555 FAX: 310-324-3030  
WWW.MARSAIR.COM