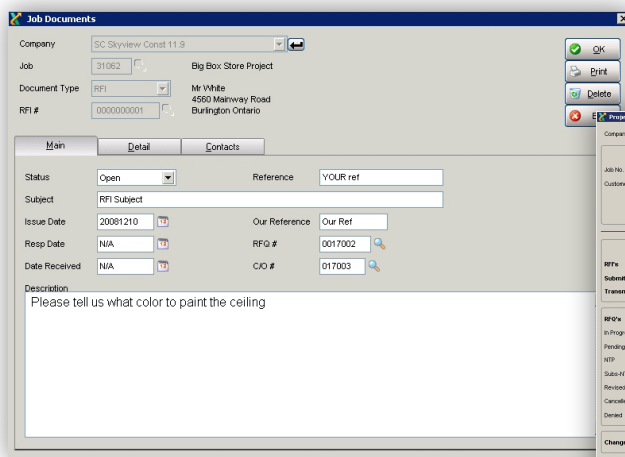


## Managing your projects couldn't be easier.

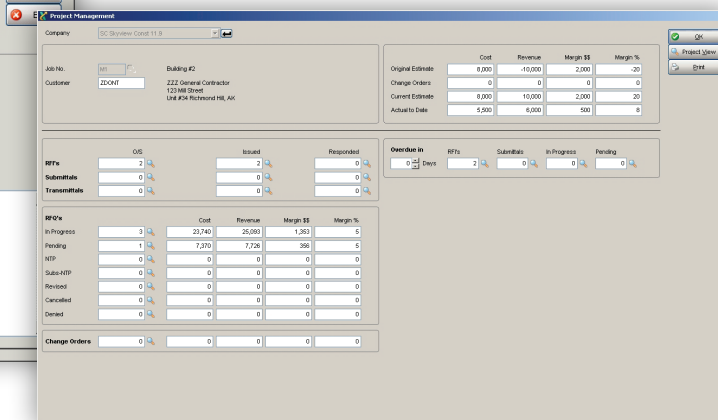
Jonas Project Management (PM) helps you steer away from traditional methods of project management like pen, paper and multiple spreadsheets. The PM module is fully integrated with all aspects of the Jonas core system and is used to manage the workflow of a project from start to finish. Project Management tracks items that must be fulfilled under a contract, including RFIs, transmittals, submittals and change order requests.

Designed as a central location to track cost and non-cost related information for a project, PM allows vital information and documentation to be at the users' fingertips instantly. This module will greatly assist with the planning; organizing and controlling of resources related to a job and is essential for construction companies looking to complete time consuming projects.

Features	Benefits
<b>Project Manager's Dashboard</b>	From one screen, your project managers can access Actual Billing, Actual Cost, RFI, Submittal, Transmittal, Proposed Change Orders, Actual Change Orders, Purchase Order, and Subcontract information. All of this information is available with drill down capability.
<b>RFI's</b>	Track and manage outstanding RFI's along with requested response date, status, and the ability to link RFI's to Proposed Change Orders and Customer Change Orders.
<b>Submittals</b>	Create submittal request letters, issue date, received date (from sub or vendor), status (Approved, Approved as Noted, Rejected, Revise & Resubmit).
<b>Transmittals</b>	Track all transmittals (submittals, as-built drawings, O&M manuals, etc.).
<b>All Outstanding Documents</b>	With one click, your project managers can see all outstanding documents including: Proposed Change Orders, RFI's and Submittals.



Job Documents view.



Project Management dashboard.