



DETROIT RADIANT PRODUCTS COMPANY

Series 3 Burner Control Box Prototype

Series 3 Burner Control Box

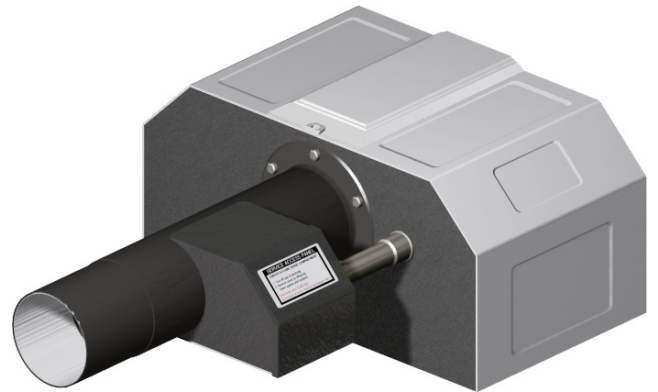
Detroit Radiant Products Company is proud to unveil the new Series 3 burner control box upgrade to our existing burner control box design.

The goals set forth in the Series 3 design were to improve product operation and serviceability, enhance product appearance, utilize familiar controls and finally to make a production friendly unit. We are pleased to report that each of these goals have been achieved!

We are confident and excited about the Series 3 features and improvements and look forward for your support as the unit now enters the production phase.

Features Include:

- A newly designed housing.
- Hinged side door access.
- Three compartment design.
- Serviceable while unit is in operation.
- Balanced design and tube location.
- Re-designed ignitor box.
- Dimensional footprint similar to previous versions.
- Constructed with many common components incorporated in prior versions.
- Ability to rotate 90° from horizontal.
- Folded outer edges enhance appearance and also seal control compartments.
- Generic component plate design for ease in construction and service.
- Enhanced multi-color finish.
- Flex connector.
- 120V Electrical power cord.
- New markings, manuals and literature.



Detroit Radiant Products Company
21400 Hoover Road
Warren, Michigan 48089
Ph: 586-756-0950 Fx: 586-756-2626
www.reverberray.com